

11  
1983

# GLENDINING & CO

7 Blenheim Street, New Bond Street, W1Y 9LD

in conjunction with

A. H. BALDWIN & SONS LTD.



AMERICAN NUMISMATIC SOCIETY

SEP 2 1983

The Pridmore Collection of

## The Coins of the British Commonwealth of Nations

Part III:

THE UNIFORM COINAGE OF INDIA

Day of Sale

MONDAY 17th OCTOBER, 1983 at 1 p.m.

Price £5

## CONDITIONS OF SALE

---

- FIRST.—The highest bidder to be the buyer; and if any dispute arise between two or more bidders, the lot so in dispute shall be immediately put up again and re-sold, provided the Auctioneer cannot decide the said dispute.
- SECOND.—The Auctioneer has absolute discretion to divide any lot, to combine any two or more lots, to withdraw any lots, to refuse bids and to regulate the bidding.
- THIRD.—All lots are put up for sale subject (a) to any reserve price imposed by the seller and (b) to the right of the seller to bid either personally or else by any one person who may be the Auctioneer.
- FOURTH.—The purchasers to give in their names and place of abode, and to pay down 25% of the purchase price or more in part payment, or the whole of the purchase-money, *if required*; in default of which the lot or lots so purchased to be immediately put up again and re-sold.
- FIFTH.—Each lot is believed to be genuine, but should any lot prove to be a forgery, or reprint, or wrongly described in the catalogue, the purchaser is at liberty to take or reject it, provided always that notice of such rejection be made and the lot returned within seven days from date of sale.
- SIXTH.—The Auctioneers will not hold themselves responsible for any action that may arise, acting solely as agents between buyer and seller and for both equitably.
- SEVENTH.—The Auctioneers will not hold themselves responsible for the safe custody of any lots left more than three days after the sale.
- EIGHTH.—Buyers must satisfy themselves as to the accuracy of their purchases at the time of delivery. The Auctioneers not to be held responsible for any discrepancy which might be discovered after the lots have been removed from their premises.
- NINTH.—A daily storage fee of £0.25 per lot will be payable by the purchaser on lots not removed within seven days of the date of sale. The Auctioneers reserve the right to re-sell by Auction or privately, without notice to the buyer, all lots not removed from the Auctioneers' premises within fourteen days of the date of sale.
- 

### Please Note.

The metal in which the coins are struck is indicated thus:—

*A* = gold, *AR* = silver, *Æ* = copper or bronze.

*El* = Electrum (an alloy of gold and silver).

*Bl* = Billon (an alloy of silver and copper).

Care is taken to describe accurately the condition of coins and medals, using the following scale: *Extremely fine*, *Very fine*, *Fine*, and *Good*. Where no condition is stated it may be assumed that the coins and medals are not in good condition.



List of  
**ESTIMATES**  
 for the Sale of Part III of the  
**FRED PRIDMORE**  
 Collection of  
**BRITISH COMMONWEALTH COINS**  
 to be sold on  
**MONDAY, 17th OCTOBER, 1983**

Lot	£	Lot	£	Lot	£	Lot	£
1	600	26	100	51	20	76	150
2	1,000	27	150	52	200	77	180
3	500	28	150	53	500	78	180
4	1,500	29	60	54	500	79	100
5	200	30	100	55	600	80	150
6	150	31	150	56	500	81	160
7	300	32	100	57	600	82	160
8	150	33	100	58	100	83	180
9	250	34	100	59	100	84	200
10	300	35	100	60	600	85	180
11	200	36	100	61	600	86	180
12	200	37	100	62	1,000	87	180
13	220	38	100	63	800	88	180
14	150	39	120	64	30	89	100
15	200	40	120	65	1,200	90	120
16	1,000	41	100	66	200	91	100
17	750	42	100	67	200	92	100
18	500	43	150	68	800	93	100
19	125	44	100	69	200	94	100
20	125	45	100	70	200	95	100
21	100	46	75	71	180	96	150
22	100	47	100	72	180	97	80
23	80	48	50	73	100	98	80
24	100	49	30	74	1,000	99	80
25	150	50	10	75	150	100	50

Lot	£	Lot	£	Lot	£	Lot	£
101	... 1,500	144	... 100	187	... 100	230	... 30
102	... 100	145	... 50	188	... 120	231	... 1,200
103	... 500	146	... 250	189	... 120	232	... 700
104	... 350	147	... 50	190	... 150	233	... 150
105	... 300	148	... 100	191	... 50	234	... 250
106	... 350	149	... 100	192	... 50	235	... 250
107	... 200	150	... 50	193	... 30	236	... 250
108	... 100	151	... 30	194	... 600	237	... 150
109	... 300	152	... 50	195	... 500	238	... 200
110	... 70	153	... 70	196	... 400	239	... 500
111	... 60	154	... 100	197	... 600	240	... 200
112	... 80	155	... 50	198	... 300	241	... 50
113	... 70	156	... 30	199	... 150	242	... 150
114	... 50	157	... 35	200	... 130	243	... 250
115	... 100	158	... 40	201	... 130	244	... 100
116	... 500	159	... 30	202	... 130	245	... 300
117	... 250	160	... 100	203	... 100	246	... 250
118	... 250	161	... 120	204	... 150	247	... 250
119	... 350	162	... 500	205	... 130	248	... 200
120	... 100	163	... 75	206	... 150	249	... 150
121	... 100	164	... 25	207	... 100	250	... 200
122	... 100	165	... 50	208	... 100	251	... 100
123	... 150	166	... 75	209	... 100	252	... 250
124	... 150	167	... 75	210	... 75	253	... 400
125	... 100	168	... 50	211	... 150	254	... 200
126	... 200	169	... 30	212	... 150	255	... 200
127	... 200	170	... 50	213	... 50	256	... 200
128	... 120	171	... 75	214	... 200	257	... 100
129	... 200	172	... 35	215	... 200	258	... 150
130	... 200	173	... 10	216	... 100	259	... 150
131	... 300	174	... 20	217	... 350	260	... 200
132	... 150	175	... 50	218	... 50	261	... 100
133	... 100	176	... 10	219	... 50	262	... 100
134	... 350	177	... 25	220	... 150	263	... 150
135	... 250	178	... 25	221	... 150	264	... 400
136	... 100	179	... 15	222	... 150	265	... 200
137	... 200	180	... 100	223	... 150	266	... 250
138	... 250	181	... 50	224	... 1,000	267	... 300
139	... 70	182	... 50	225	... 1,000	268	... 100
140	... 50	183	... 50	226	... 250	269	... 300
141	... 150	184	... 20	227	... 200	270	... 350
142	... 150	185	... 150	228	... 200	271	... 200
143	... 150	186	... 75	229	... 250	272	... 100

Lot	£	Lot	£	Lot	£	Lot	£
273	... 100	284	... 100	295	... 100	306	... 100
274	... 100	285	... 120	296	... 100	307	... 100
275	... 100	286	... 100	297	... 100	308	... 60
276	... 100	287	... 120	298	... 100	309	... 100
277	... 100	288	... 120	299	... 100	310	... 100
278	... 100	289	... 120	300	... 100	311	... 100
279	... 100	290	... 50	301	... 100	312	... 1,000
280	... 100	291	... 100	302	... 100	313	... 100
281	... 100	292	... 1,500	303	... 100	314	... 100
282	... 100	293	... 100	304	... 100	315	... 50
283	... 100	294	... 100	305	... 100		





# GLENDINING & Co.

7 Blenheim Street, New Bond Street  
London, W1Y 9LD.

---

Sale of Part III of the  
**FRED PRIDMORE COLLECTION  
OF BRITISH COLONIAL COINS**

held on

Monday, 17th October, 1983

---

Lot	£	Lot	£	Lot	£	Lot	£
1 ...	650	27 ...	130	53 ...	820	79 ...	160
2 ...	800	28 ...	130	54 ...	700	80 ...	180
3 ...	400	29 ...	50	55 ...	1,150	81 ...	130
4 ...	2,300	30 ...	65	56 ...	580	82 ...	140
5 ...	280	31 ...	220	57 ...	700	83 ...	140
6 ...	210	32 ...	110	58 ...	230	84 ...	180
7 ...	310	33 ...	105	59 ...	220	85 ...	140
8 ...	220	34 ...	120	60 ...	980	86 ...	170
9 ...	190	35 ...	140	61 ...	1,000	87 ...	160
10 ...	580	36 ...	130	62 ...	1,200	88 ...	170
11 ...	340	37 ...	110	63 ...	850	89 ...	120
12 ...	230	38 ...	70	64 ...	65	90 ...	220
13 ...	270	39 ...	120	65 ...	1,150	91 ...	210
14 ...	230	40 ...	110	66 ...	400	92 ...	220
15 ...	210	41 ...	95	67 ...	170	93 ...	230
16 ...	920	42 ...	150	68 ...	420	94 ...	250
17 ...	1,050	43 ...	260	69 ...	180	95 ...	190
18 ...	620	44 ...	290	70 ...	180	96 ...	160
19 ...	110	45 ...	130	71 ...	150	97 ...	200
20 ...	150	46 ...	50	72 ...	200	98 ...	180
21 ...	120	47 ...	120	73 ...	160	99 ...	150
22 ...	95	48 ...	30	74 ...	1,200	100 ...	110
23 ...	55	49 ...	40	75 ...	200	101 ...	2,300
24 ...	75	50 ...	15	76 ...	250	102 ...	160
25 ...	150	51 ...	10	77 ...	210	103 ...	480
26 ...	120	52 ...	200	78 ...	170	104 ...	380

Lot	£	Lot	£	Lot	£	Lot	£
105	310	148	65	191	50	234	180
106	370	149	75	192	160	235	150
107	250	150	110	193	80	236	280
108	80	151	25	194	880	237	100
109	190	152	25	195	880	238	310
110	65	153	45	196	520	239	380
111	40	154	75	197	720	240	100
112	50	155	30	198	350	241	30
113	55	156	40	199	210	242	160
114	60	157	70	200	160	243	270
115	70	158	110	201	140	244	280
116	480	159	40	202	210	245	310
117	320	160	120	203	85	246	370
118	300	161	190	204	190	247	290
119	400	162	1,000	205	210	248	230
120	280	163	90	206	200	249	80
121	75	164	40	207	90	250	300
122	85	165	95	208	130	251	360
123	140	166	45	209	200	252	260
124	110	167	60	210	60	253	300
125	90	168	25	211	120	254	280
126	130	169	20	212	120	255	100
127	170	170	75	213	60	256	250
128	80	171	90	214	180	257	55
129	170	172	20	215	130	258	150
130	110	173	30	216	100	259	160
131	180	174	30	217	290	260	210
132	100	175	70	218	30	261	65
133	95	176	15	219	120	262	50
134	300	177	35	220	120	263	120
135	310	178	15	221	110	264	220
136	270	179	40	222	110	265	80
137	270	180	55	223	110	266	150
138	270	181	55	224	1,150	267	120
139	50	182	75	225	1,250	268	120
140	100	183	60	226	200	269	130
141	140	184	30	227	250	270	180
142	210	185	85	228	250	271	230
143	150	186	45	229	160	272	65
144	80	187	85	230	80	273	130
145	130	188	120	231	950	274	85
146	120	189	100	232	520	275	75
147	350	190	140	233	180	276	110







**Auctioneers**

Glendining & Co.  
7 Blenheim Street  
New Bond Street  
London W1Y 9LD  
Telephone 01-493 2445 (3 lines)  
Telegrams Glens London W1

**Catalogued by**

A. H. Baldwin & Sons Ltd.  
11 Adelphi Terrace  
London WC2N 6BJ  
Telephone 01-930 6879  
Telegrams Numismos London WC2  
Telex 8954093 Numism G

CATALOGUE OF

The Pridmore Collection of

The Coins of the  
British Commonwealth  
of Nations

Part III:

THE UNIFORM COINAGE OF INDIA

East India Company 1835 - 1858

Imperial Period 1858 - 1947

NEW ZEALAND

Modern Coins and Tokens

**Day of Sale**

**Monday 17th October 1983 at 1 p.m.**

On view Thursday and  
Friday prior to sale

9 a.m. to 12 noon and 1 p.m. to 4 p.m.



## FOREWORD

This Third (and Final) Part of the Pridmore Collection comprises the Uniform Series of India listed in Pridmore's India, Vol. 2. The catalogue follows Pridmore's arrangement by denomination: Proof Sets, which cannot be listed thus, follow the Patterns at lot 231 and are in strict date order. Also included (lots 292-311) are New Zealand coins, mostly modern sets, and tokens.

A major problem is that of restrikes. Having finished writing the catalogue, and with the benefit of hindsight, one feels one might have done things a little differently. Restrikes have not been qualified as to rarity, though some of the earlier striking, mostly from the Virgil M. Brand Collection, undoubtedly are rare. Estimates for such pieces are low, perhaps too low.

Pedigrees are few: as with the earlier Indian coins sold in Part II, several pieces are from the J. B. Caldecott (Sotheby 11-13 June, 1912) and Dr. A. N. Brushfield (Glendining, 2-3 November, 1949) auction sales and the Virgil M. Brand and H. M. Lingford Collections. Many of the more modern pieces were purchased from A. P. Spencer, Artist/Engraver at the Calcutta Mint, 1926-1945, perhaps best known for the Pattern Dollars of 1941, lots 224 and 225. In the *British Numismatic Journal* vol. XXXVII (1968), pp. 159-174, Pridmore lists this talented artist's work based on Spencer's own collection, subsequently acquired by Pridmore. He also gives interesting biographical details.

One provenance of Indian coins sold in the previous sale was "General Hyde", given in the Montagu Catalogue and elsewhere. Having found out that he had been Mint Master at the Calcutta Mint 1861-1876, it should have been obvious to me (but wasn't at the time) that Pridmore would refer to this officer in the text of Volume 2 (see pp. 54, 56, 59 and 61). He was a Member of the (Royal) Numismatic Society from 1873 until 1880.

There are perhaps less coins illustrated than one might expect. Volume 2 is well illustrated, and very often the difference between one specimen and another is so small that the catalogue plates would not identify the piece on offer. Thus type coins tend to be illustrated. Edward Baldwin photographed the coins and prepared the nine plates; weights often differ from those published, as explained in Part I; my thanks are due to Mr. E. G. V. Newman who provided information as to the metal content of the 'White Metal' patterns (lots 199-223) and Graham Dyer, Librarian and Curator of the Royal Mint, for many helpful comments; as previously, Pridmore's tickets are sold with the coins.

Peter Mitchell,

A. H. BALDWIN & SONS LTD.

CATALOGUE of  
The Pridmore Collection of  
**The Coins of the  
British Commonwealth of Nations**

Part III

THE UNIFORM COINAGE OF INDIA, NEW ZEALAND

*Day of Sale*

**Monday, 17th October, 1983**

commencing at 1 p.m.

**EAST INDIA COMPANY 1835-1858**

LOT

**Gold**

TWO MOHURS

**William IV**

1 1835, Restrike Proof, head right, R(ober) S(aunders) incuse on truncation, WILLIAM IIII, KING, 1835., *rev.* lion left in front of palm, EAST INDIA COMPANY above, value in English and Persian below, edge grained (as Pr. 3). *Slight scratches both sides, otherwise brilliant, an early striking.*

1

2\* 1835, Proof, struck in SILVER, types similar to last (Pr. 4). *Trace of double striking on obverse, extremely fine and extremely rare; ex Farouk (2382).*

1

3 1835, Proof, struck in COPPER, similar to last two coins (Pr. 5). *Good extremely fine but lacquered, extremely rare; ex Farouk (2382).*

1

**Victoria**

4\* 1854, Proof or Pattern, struck in SILVER, head left, no initials on truncation, probably by L. C. Wyon (p. 15), VICTORIA QUEEN 1854, *rev.* as William IV issues, edge plain (Pr. 7). *Obverse polished otherwise brilliant, extremely rare, Pridmore (p. 15), quotes '4 Proofs of the Coinage struck in fine silver', and specimens in gold are mentioned, but he notes on the ticket 'six sets only prepared in the Royal Mint' (see lots 16-18 for the smaller denominations); ex Farouk (2385).*

1

Lot

ONE MOHUR

**William IV**

- 5\* 1835, similar to lot 1 with R.S. incuse on truncation, Calcutta Mint (Pr. 9). *Very fine.* 1
- 6 1835, Restrike Proof, similar to last with F(orbes) incuse on truncation (as Pr. 14). *Some hairline scratches and lacquered, otherwise brilliant.* 1
- 7 1835, Proof, struck in COPPER, similar to last (Pr. 16). *Brilliant but lacquered, extremely rare; ex Farouk (2384).* 1
- 8 1835, Restrike Proof, types similar but truncation plain, and omits dot after date, Bombay Mint (as Pr. 17). *Brilliant.* 1

**Victoria**

- 9 1841, Type I with continuous legend, truncation plain, Calcutta Mint (Pr. 18). *Rather marked, almost extremely fine (lustre).* 1
- 10\* 1841, similar, with dot on truncation, possibly the privy mark for the Bombay Mint (Pr. 18). *Almost mint state, rare.* 1
- 11 1841, similar with S(mith) on truncation, Madras Mint (Pr. 20). *Almost extremely fine.* 1
- 12\* 1841, Type II with divided legend, w.w incuse on truncation, no serif to 4, Calcutta Mint (Pr. 22 (1)). *Almost extremely fine.* 1
- 13 1841, similar with w.w. on truncation but with serif to 4 (Pr. 22 (2)). *Extremely fine.* 1
- 14 1841, Restrike Proof, similar to lot 12 omitting serif to 4 (as Pr. 23). *Reverse rim knock, otherwise brilliant, an early striking.* 1
- 15 1841, Restrike Proof, a mule with Victoria *obv.* as last and *rev.* very similar but from a William IV die (Pr. 24). *Scratches on obverse, otherwise brilliant.* 1
- 16\* 1854, Proof or Pattern, struck in SILVER, similar to lot 4 (Pr. 26). *Brilliant and toned, extremely rare.* 1
-



## LOT

- 17\* 1854, Proof or Pattern, Ten Rupees, struck in SILVER, similar to last (Pr. 28). *Brilliant and toned, extremely rare.* 1
- 18\* 1854, Proof or Pattern, Five Rupees, struck in SILVER, similar to last two coins (Pr. 31). *Brilliant and toned, extremely rare.* 1

## Silver

## ONE RUPEE

## William IV

- 19 1835 (6): Calcutta (5), with *rev.* two leaves (3), R.S. incuse and F incuse (2) (Pr. 32, 34 (2)) and with *rev.* 'bud' leaves (2), F incuse, *very fine*, and F in relief (Pr. 36, 38); Bombay (1) with truncation plain (Pr. 40). *Except as stated, extremely fine or nearly so.* 6
- 20\* 1840, Calcutta, F in relief, *rev.* two leaves (Pr. 39). *Two scratches across face, almost very fine, very rare.* 1
- 21 1835, Proof, Calcutta, F incuse, *rev.* 'bud' leaves (Pr. 35). *Obverse a little marked and dull, reverse brilliant, rare.* 1
- 22\* 1835, Proof, Calcutta, F in relief, *rev.* two leaves (Pr. 38). *Brilliant and rare.* 1
- 23 1835, Proof, Bombay, with truncation plain and *rev.* 'bud' leaves (Pr. 41). *Obverse a little marked with dent on cheek, dull, reverse brilliant, rare.* 1

## Victoria

- 24 1840 (4): Type I with 'English' head (3), all Calcutta with *rev.* crescent on bow, 19 berries (2) and 35 berries (Pr. 42 (2), 44), *extremely fine or nearly so*; a Restrike Proof, types similar to last with 34 berries (as Pr. 44), *brilliant (rims bevelled).* 4
- 25 1840 (7), all Type I 'English' head, Madras, with s incuse and *rev.* two leaves (5), 19 berries (2), one with *rev.* V on ribbon, *rare*, 20 berries and 'bud' leaves, "perhaps a retouched Bombay reverse", and 35 berries (2), one noted as 'modified head' but has features of 'Indian' head (Pr. 45, 47, 49, 50 (2)) and with truncation plain and *rev.* v on bow with 19 berries (2), date figure 4 varies (both Pr. 48), *rare. Extremely fine or better.* 7

## LOT

- 26 1840 (5): Type I with 'English' head (4), all Bombay with truncation plain, 19 berries (3 vars.) and 35 berries with modified head, *rare* (Pr. 51 (3), 52); Type I with 'Indian' head, Calcutta (1) with *rev.* crescent on bow and 35 berries (Pr. 53), *rare. Extremely fine or better.* 5
- 27\* 1840, Proof, Type I with 'Indian' head, types similar to last (Pr. 54). *Frosting bruised on high points, otherwise brilliant, rare.* 1
- 28 1840, Proof, Type I with 'Indian' head, similar to last but tiny berry opposite o of ONE removed (Pr. 55). *Brilliant with dark tone, rare.* 1
- 29 1840 (4), all Type II (introduced 1850), Calcutta and Bombay, with w.w. (4), plain bow (2 vars., Pr. 56), *extremely fine*, and shaded bow (2 vars., Pr. 57), *very fine and fine.* 4
- 30 1840 (5), all Type II, Madras, with w.w.s.(mith.), w.w.B(ell) (three vars.) and w.w.B(orr), all in relief (Pr. 59, 60 (3), 62), *first three nearly extremely fine, others very fine and fine*, and a copper forgery, *fine.* 6
- 31\* 1840, Proof, Type II with w.w. in relief on truncation but with Wyon's 1849 *rev.* with 25 berries (see Pr. 64 and lot 65), redated 1840 (Pr. 63). *Hair scratches on obverse, otherwise brilliant and toned (rims bevelled), rare, 'evidently a Calcutta test striking which proved unsuitable'; ex Virgil M. Brand Collection.* 1

## HALF-RUPEE

**William IV**

- 32 1835 (6): Calcutta (5), with *rev.* bud leaves and 21 berries (2), R.S. incuse and F incuse, and with *rev.* two leaves (3), F incuse (2), 20 berries and 19 berries, F in relief with 19 berries (Pr. 66, 68-71); Bombay (1), with truncation plain (Pr. 72). *First mint state, others mostly extremely fine or better.* 6

## Lot

**Victoria**

- 33 1840 (6): Type I (4), 'English' head (3), Calcutta with crescent on bow, *rare*, and Bombay with truncation plain (2) (Pr. 73, 76 (2)) and 'Indian' head (1), Calcutta with crescent on bow (Pr. 77); Type II (2), Calcutta and Bombay, w.w. incuse (Pr. 80) and Madras, s w.w. (s in relief) (Pr. 82), both read *ata* for *ana* (p. 15). *Mostly extremely fine or nearly so.* 6
- 34 1840, Proof, Type I with 'Indian' head, Calcutta with crescent on bow (Pr. 78). *Trace of verdigris by date and hair scratches on obverse, otherwise brilliant, rare.* 1
- 35 1840, Proofs (2), Type I/II mule, with 'Indian' head, Calcutta (Pr. 79), *has been cleaned and polished and with scratches on reverse, extremely fine and rare*, and Type II/I mule, Calcutta with crescent on bow (Pr. 81), *brilliant and toned (rims bevelled), rare, ex Virgil M. Brand Collection.* 2

## QUARTER-RUPEE

**William IV**

- 36 1835 (10): Calcutta (8), r.s. incuse (2), Hindi and Persian (Pr. 85, 86), F incuse (3), 20 berries, *fine*, 19 berries and 18 berries (Pr. 88-90) and F in relief (3), one a Proof (Pr. 91 (2), 92); Bombay, with truncation plain (2), one with diamond or lozenge incuse on bow, noted as Proof (Pr. 96, 97 (?)). *Except as stated, extremely fine or better.* 10
- 37 1840 (8): Type I with 'English' head (6), Calcutta (1) with crescent on bow, 20 berries and curl on cheek (Pr. 98), Madras with s incuse (3), one with v on bow, *fine* (Pr. 100 (2), 101) and Bombay with truncation plain (2), one with re-engraved eyebrow and lips (Pr. 102 (2)); Type I with 'Indian' head (2), both Calcutta with crescent on bow, 34 berries and curl on cheek, currency (Pr. 103), *scratch on face*, and Proof (Pr. 104), *brilliant and rare. Except as stated, mostly about extremely fine.* 8
- 38 1840 (7): Type II, Calcutta and Bombay with w.w. in relief (2), date figure 4 without and with serif (Pr. 105, 107), *extremely fine or better*; Type II/I mules (2), both with crescent on bow and 34 berries, currency (Pr. 108), *good very fine*, and Proof (Pr. 109), *hair scratches and lightly cleaned otherwise brilliant (rims bevelled), rare*; Type II, Madras (3), w.w.s (1) and w.w.B (2) (Pr. 110, 111 (2)), *second very fine, others better.* 7



Lot

## TWO ANNAS

## Victoria

- 39 1841, Type I with 'English' head (8): Calcutta and Bombay, with crescent on bow (4), currency (2), one with curl between ribbons (Pr. 114, 115), *almost extremely fine*, and Proofs (2), both with incuse mark (?) on truncation (both Pr. 116), *brilliant, one toned, other with rims bevelled, ex Virgil M. Brand Collection*; Madras with s incuse (3), single curl (2), one with v on bow, and with double curl and v on bow (Pr. 117-119), *extremely fine or better*; Bombay, with truncation plain (Pr. 120), *extremely fine*. 8
- 40 1841 (8): Type II, Calcutta and Bombay (2), with w.w. in relief and 9 berries (both Pr. 121), *almost extremely fine*; Type II/I mules (2), both with crescent on bow and 16 berries, currency (Pr. 123), *scratch on face but good very fine*, and Proof (Pr. 124), *brilliant (rims bevelled) ex Virgil M. Brand Collection*; Madras with s w.w. (s incuse) (3), with 9 berries (2, both Pr. 125), one noted as Proof, *mint state, other almost extremely fine*, and 8 berries (Pr. 127), *extremely fine*; Bombay, with .w.w and 10 berries (Pr. 128), *extremely fine*. 8

## Copper

## HALF-ANNA

- 41 1835 (11), Bombay, 29.5-30.4 m.m. (3 vars., all Pr. 131), one noted as Proof, and Madras, 30.7-31.2 mm (8 vars., all Pr. 133); 1845 (2), both Calcutta, date figure 4 with and without serif (Pr. 137, 138). *Mostly extremely fine or better, some original colour*. 13
- 42\* 1835, Proof or Pattern, with beaded rims and edge grained (Pr. 135). *Obverse with patchy dark tone, almost mint state, extremely rare*. 1
- 43\* 1835, Proof or Pattern, struck in SILVER, similar to last (Pr. 136). *A little dull otherwise brilliant, extremely rare*. 1

## QUARTER-ANNA

- 44\* 1833, Proof or Pattern, Bombay 25.3 mm., *obv.* as the Bombay Presidency, Quarter-Anna (Pr. vol. 1, p. 166, no. 218), *rev.* similar to the adopted currency issue with large bow as Pr. 140, but with 35 berries (Pr. 139). *Mint state, the obverse with original colour, the reverse toned, extremely rare*. 1

## LOT

- 45 1835 (11): Bombay, 25.3 mm. (2), large bow with 30 berries and small bow with 17 berries (Pr. 140, 141), *extremely fine*; Madras, 25.5 mm (8 vars., Pr. 142 (2), 143-147 (2), *last very fine, others extremely fine or better*, and a Proof, 25.5 mm, labelled Bombay (having been altered from Madras), with 17 berries (as Pr. 140, Bombay), but written in ink on the edge, undoubtedly contemporary, is the word MADRAS, apparently not noticed by Pridmore, but seemingly confirming the mint of issue, *mint state, reverse toned*. 11
- 46 1835 (6), all Calcutta, 26.2 mm., with 17 berries (5), currency (4 vars., Pr. 148), *one very fine*, and Proof (Pr. 148A), *mint state*, and with 18 berries (Pr. 149). *Except as stated, extremely fine or better, mostly with original colour*. 6
- 47\* 1849, Proof or Pattern, types as Pr. 144 with flat top I introduced 1849 (Pr. 150). *Three rim knocks, otherwise mint state with dark tone, extremely rare*. 1
- 48 1857 (3), single leaves (1), double leaves (2) and 1858 (1), double leaves (Pr. 151, 152 (2), 154), attributed to R. Heaton & Sons (pp. 16 and 22), *last extremely fine, others very fine*; 1858, with single leaves (3 vars., Pr. 158), attributed to J. Watt & Co., *extremely fine*. 7
- 49 Machine Trial by J. Watt & Co., types as last from worn dies, *obv.* defaced with date erased, *rev.* J. W. & Co. in relief around value (Pr. 158, this specimen). *Slightly mis-struck (off-centre), almost very fine, interesting*. 1

## HALF-PICE

- 50 1853, Calcutta, for circulation in the Bengal Presidency (p.15) (Pr. 159). *Good extremely fine*. 1

## TWELFTH-ANNA

- 51 1835 (6), Madras, 17.7-17.9 mm. (4 vars., Pr. 161) and Bombay, 18.0 mm. (2 vars., Pr. 162); 1848, Calcutta, 17.5 mm (Pr. 163). *Extremely fine or better*. 7

LOT

- 52\* 1835, Proof or Pattern Set, comprising Half-Anna, 30.8 mm, Quarter-Anna, 26.3 mm, and Twelfth-Anna, 17.8 mm, all with broad flat rims normally characteristic of the Calcutta Mint (Pr. 165-7). *Brilliant with original colour, extremely rare, although a new copper coinage was authorised 7 December 1835, for some years only the Quarter-Anna was struck.*

3

### Silver Patterns

#### Calcutta Mint

ONE RUPEE

#### William IV

- 53\* 1834 (submitted 6 April 1834), *obv.* by Kasinath Dass, from an English gold sovereign, bare head of William IV right, Latin legend GULIELMUS IIII D : G : BRITANNIAR : REX F : D : , *rev.* by James Prinsep from an English medal, a lotus flower and ONE RUPEE 1834, within wreath, EAST INDIA COMPANY and value in Hindi, Persian and Bengali around, edge plain, 26.4 mm (Pr. 168). *Usual die crack, almost extremely fine, extremely rare.*

1

∴ *It was this test piece that satisfied the Mint Committee of the skill of Kasinath Dass, Note Engraver to the Treasury, and on the 1 May 1834 he was appointed in the dual capacity of Head Die Cutter and Copper Plate Engraver at the Calcutta Mint (p.4).*

- 54\* 1834 (submitted 17 November 1834), *obv.* similar, Latin legend varies, GULIELMUS IIII D : G : BRIT. ET IND. REX, *rev.* no dot after date, wavy border both sides, edge plain (convex, as though not struck in a collar), 32.0 mm (Pr. 170). *Scratches both sides, extremely fine and toned, extremely rare; ex Dr. A. N. Brushfield (189) and H. M. Lingford Collections.*

1

∴ *The Latin IND[IAE] anticipates the Imperial declaration of 1877 by some 43 years. The Governor-General, Lord William Bentinck, 'did not approve of the incongruity of a Latin inscription on one side and an English one on the other' and requested that other designs be prepared (p.5).*



## Lot

- 55\* 1834 (submitted 25 March 1835), *obv.* lion and palm design by John Flaxman (as on the gold), BRITISH INDIA in exergue, *rev.* as last, edge plain, 31.0 mm (Pr. 171). *Some marks otherwise brilliant and toned, extremely rare; ex Dr. A. N. Brushfield (193) and H. M. Lingford Collections* 1
- ∴ *Flaxman's lion and palm design was selected by Lord Bentinck for the obverse of the proposed new coinage, but was rejected by his successor, Sir Charles Metcalfe (pp. 5 and 6).*
- 56\* 1834 (submitted 25 March 1835), *obv.* head of William IV right (as lot 54), but with English legend WILLIAM IIII .KING . , *rev.* as last two coins, edge grained, 31.2 mm (Pr. 172). *Scratch on reverse, otherwise brilliant and toned, extremely rare; ex H. M. Lingford Collection.* 1
- 57\* 1834 (submitted 25 March 1835), similar to last but *obv.* letters smaller and comma after the IIII, edge grained, 31.6 mm (Pr. 174). *Brilliant and very rare; ex H. M. Lingford Collection.* 1
- 58\* 1834, a Restrike of last, c. 1950-1960, 31.6 mm (Pr. 174, note). *Brilliant and toned.* 1
- 59\* 1834, another Restrike of lot 57 on a smaller flan, 30.8 mm (Pr. 175). *Brilliant with dark tone.* 1
- 60\* Undated (requested between 25 and 31 March 1835), *obv.* as lot 56 with dot after IIII, *rev.* Flaxman's lion and palm as the obverse of lot 55, edge plain, 30.9 mm (Pr. 176). *Hair scratches on obverse otherwise brilliant and toned, extremely rare; ex Dr. A. N. Brushfield (192) and H. M. Lingford Collections.* 1
- 61\* 1835 (prepared between 29 June and 17 August 1835), *obv.* head of William IV right as lot 57, with R. S. incuse on truncation and even smaller lettering, *rev.* value only in English and Persian (Hindi and Bengali omitted, as on the adopted currency issue), without wavy line either side, edge grained, 30.1 mm (Pr. 178). *Hair scratches on obverse, brilliant and toned, extremely rare; ex Dr. A. N. Brushfield (194) and H. M. Lingford Collections* 1

LOT

**Bombay Mint****William IV**

## ONE RUPEE

- 62\* 1835 (submitted to the Bombay Mint Committee on 24 December 1836), *obv.* similar to last but MD on truncation, *rev.* as adopted currency issue with value in Persian transposed with the date, edge grained, 30.3 mm (Pr. 179). *Obverse with hair scratches, brilliant and toned, excessively rare; ex G. W. S. Bieber (652), J. G. Murdoch (192) and Dr. A. N. Brushfield (195).* 1

## HALF-RUPEE

- 63\* 1835 (submitted to the Bombay Mint Committee on 24 December 1836), types similar to last, omits initials on truncation, edge grained, 24.2 mm (Pr. 180). *Brilliant and toned, excessively rare; ex Dr. A. N. Brushfield (195).* 1

- 64\* Blank stamped  $\frac{1}{2}$  RUPEE, 86.4 grains, 23.8 mm (Prinsep submitted blanks for the new rupee to the Mint Committee on 24 October 1834 (p.4); details of the silver coins to be issued were proclaimed 1 September 1835 (p.8)). *Very fine.* 1

**Victoria**

## SETS

- 65\* 1849, Proof or Pattern Set, by W. Wyon, *obv.* as the adopted Type II, *rev.* very similar to the adopted design by Kasinath Dass, who copied Wyon's reverse as it did not balance with the obverse die (p.14), Rupee, with 25 berries (c.f. lot 31), Half-Rupee, the Persian *ána* correctly spelt (pp. 15 and 34), Quarter-Rupee, all with edge grained, and Two-Annas, with edge plain (Pr. 64, 83, 112, 129). *Reverse of last with traces of corrosion, otherwise brilliant, extremely rare.* 4

- 66\* [1839], Uniface Pewter Impressions (3) for the Queen's effigy by Kasinath Dass (p.11), for the Rupee, Half-Rupee and Quarter-Rupee, all with edges plain (Pr. 182-184). *Hair scratches, otherwise mint state, excessively rare.* 3

## IMPERIAL PERIOD 1858-1947

LOT

Gold

ONE MOHUR

Victoria Queen

- 67 1862, crowned bust of Queen left, with single flower in bottom panel of bodice, VICTORIA QUEEN, rev. ONE MOHUR — INDIA 1862 within beaded circle, ten-pointed star within scrollwork around (Pr. 1). *Some marks, otherwise nearly extremely fine.* 1
- 68\* 1862, Proof, as last (Pr. 2). *Some scratches, especially in obverse field, otherwise brilliant, very rare.* 1
- 69 1862, *obv.* single flower as last two lots but V in relief in the centre of the bust on the line of the truncation (Pr. 3). *Some marks, otherwise nearly extremely fine.* 1
- 70 1862, *obv.* single flower as lot 67, *rev.* V in relief on the ornamental border below the date (Pr. 4). *Almost extremely fine.* 1
- 71 1862, *obv.* single flower and V as lot 69, *rev.* V as last (Pr.5). *Very fine.* 1
- 72 1862, *obv.* two flowers and V, *rev.* normal, as lot 67-69 (Pr. 6). *Good very fine.* 1
- 73\* 1862, a Die Trial, similar to last, struck on a copper Quarter-Anna, edge grained (Pr. 7; see notes to Pr. 7 and Pr. 46 for an explanation for the use of copper blanks). *Under-type clear, extremely fine and very rare.* 1
- 74\* 1870, Proof or Pattern, Royal Mint, by L. C. Wyon (see p.58), *obv.* with Queen's features fuller and the bust larger, *rev.* a copy of the 1862 design, distinguished by the style of the outer triangular ornaments with their clearly marked outlines, edge plain (Pr. 8). *Brilliant and extremely rare, a near perfect specimen; ex H. Montagu (111), J. G. Murdoch (127) and J. B. Caldecott (148).* 1
- 75 1870, Restrike Proof, Calcutta, types as last but with edge grained (Pr. 10). *Rather marked, almost extremely fine.* 1

## LOT

- 76 1870, Restrike Proof, *obv.* smaller (1862) bust, with two flowers and v as lot 72, *rev.* Wyon's (1870) copy (Pr. 11). *Brilliant (obverse rim filed).* 1
- 77 1875, *obv.* as last, *rev.* normal, as lots 67-69 (Pr. 13). *Good very fine, apparently the first year for the correctly dated coins in gold (see lot 101 for Proof Set).* 1
- Victoria Empress**
- 78 1877, similar to last but *obv.* reads VICTORIA EMPRESS (Pr. 14). *Good very fine.* 1
- 79\* 1878, a Bombay test striking in copper, *obv.* as last (V broken), *rev.* Wyon's (1870) copy, edge grained (Pr. 15). *Extremely fine and toned, extremely rare.* 1
- 80 1879, Restrike Proof, Bombay, similar to last (Pr. 16). *Extremely fine.* 1
- 81 1879, Calcutta, *obv.* smaller (1862) bust with two flowers and V, *rev.* normal with C in relief below the beaded circle under the date (Pr. 17). *Has been mounted and gilt (obverse die appears rusty, rims and edge filed), but good very fine.* 1
- 82 1881, as lot 78 (Pr. 18). *Very fine.* 1
- 83 1882, as lot 81 (Pr. 19). *Flaw on reverse but very fine.* 1
- 84\* 1884, as lot 78 (Pr. 20). *Almost extremely fine.* 1
- 85 1885, as last (Pr. 21). *Good very fine.* 1
- 86 1888, as last two lots (Pr. 22). *Good very fine.* 1
- 87 1889, similar (Pr. 23). *Good very fine.* 1
- 88 1891, another, similar (Pr. 24). *Good very fine.* 1

## FIFTEEN RUPEES

**George V**

- 89\* 1918, Bombay, *obv.* by Bertram Mackennal, crowned and robed bust left, GEORGE V KING EMPEROR, *rev.* type as mohur (Pr. 25). *Almost extremely fine.* 1



## LOT

## TEN RUPEES

**Victoria Queen**

- 90\* 1870, Calcutta, with Wyon's (1870) designs as lot 74 (Pr. 28).  
*Almost extremely fine.* 1
- 91 1870, Restrike Proof, similar (Pr. 29). *Brilliant (rims bevelled).* 1
- 92 1870, Restrike Proof, Calcutta, *obv.* with the features more  
finely drawn and C.M. incuse in the centre of the bust  
on the line of truncation (Pr. 32). *Brilliant.* 1
- 93 1870, Restrike Proof, similar to last (Pr. 32). *Brilliant.* 1

**Victoria Empress**

- 94 1879, Restrike Proof, with Wyon's (1870) designs as lot 91  
(Pr. 35). *Hair scratches on obverse, brilliant.* 1

## FIVE RUPEES

**Victoria Queen**

- 95 1870, Calcutta, with Wyon's (1870) designs as lots 74 and 90  
(Pr. 36). *Rather marked in obverse field, otherwise brilliant  
extremely fine.* 1
- 96\* 1870, Proof, Calcutta, *obv.* with the features more finely drawn  
and C.M. in relief in the centre of the bust on the line of  
the truncation (Pr. 40). *Obverse rather marked, ex-  
tremely fine and rare.* 1

**Victoria Empress**

- 97 1879, Restrike Proof, *obv.* from the die of the Bombay  $\frac{1}{4}$ -Rupee,  
Bust A, Pr. 408, with single rose to right of bottom  
panel of bodice and  $\Lambda$  in the centre of the bust on the  
line of the truncation (Pr. 42). *Some wear and marks,  
extremely fine* 1
- 98 1879, Restrike Proof, *obv.* from the die of the Bombay  $\frac{1}{4}$ -  
Rupee, Bust C, Pr. 414, with single rose to left of  
bottom panel of bodice and V (? broken) in the centre of  
the bust on the line of the truncation (Pr. 43). *Obverse  
field with surface flaws and rim much filed, brilliant.* 1

## LOT

- 99 1879, Restrike Proof, *obv.* from a die of the Bombay  $\frac{1}{4}$ -Rupee, Bust B, Pr. 409, with single rose in centre of bottom panel of bodice (Pr. 44). *Slight marks, brilliant.* 1
- 100 1879, Restrike Proof, with Wyon's (1870) bust as lot 95 (Pr. 45). *Poor quality, brilliant.* 1
- 
- 101\* 1875, Calcutta, Proof Set, comprising Mohur, Ten-Rupees and Five-Rupees, edges grained (Pr. 12, 33, 41). *Some hair scratches, brilliant and extremely rare, the two smaller pieces proof only dates.* 3

## Silver

## ONE RUPEE

## Victoria Queen

- 102 186-, Proof or Pattern, by L. C. Wyon, a Calcutta test striking in copper (cf. lots 73 and 79), with the final numeral of the date omitted, *obv.* crowned bust left, signed L. C. Wyon below the shoulder, VICTORIA QUEEN, *rev.* ONE RUPEE — INDIA 186- within wreath of Indian flora, edge plain, 11.27 grams (Pr. 46). *Rather smoothed, suggesting circulation as a Half-Anna (see Pr. 46, note), fine and extremely rare.* 1
- 103\* 1860, Proof or Pattern, by L. C. Wyon, a Royal Mint (silver) striking of last with date complete, edge plain, 11.13 grams (Pr. 47). *Brilliant and toned, extremely rare.* 1
- ∴ For Pr. 48, see under Proofs, lot 231.
- 104 1861, Proof or Pattern, Royal Mint, as last, edge plain, 11.28 grams (Pr. 49). *Slight marks and small flaw on reverse by N of ONE, otherwise brilliant and toned, extremely rare.* 1
- 105 1861, Proof or Pattern, by L. C. Wyon, from same dies as last (?), edge with top and bottom bevelled, the faint transverse lines perhaps caused through knocking out of the collar, edge plain, 11.18 grams (Pr. 50). *Tiny ding in in obverse field, brilliant and toned, extremely rare.* 1

## Lot

- 106 1861, Proof or Pattern, Calcutta, *obv.* from same Royal Mint die as last two coins (cf. flaw below hair knot), *rev.* top flower ornament differs, edge plain, 11.20 grams (Pr. 51). *Brilliant with dark tone, extremely rare.* 1
- ∴ For Pr. 52, see under Proofs, lot 232.
- 107\* 1861, Proof or Pattern, a Royal Mint striking in copper, from dies revised in 1863 (cf. Pr. 59 and 106, and see p.54), before the date was changed, the *obv.* in lower relief and with double band to crown, edge plain, 9.33 grams (Pr. 53). *Slight scratch behind head, otherwise brilliant, extremely rare; ex J. B. Caldecott (170).* 1
- 108 1862 (11), all type B/II: Calcutta (2), 'pineapple' and plain cone (Pr. 54, 55), *first almost mint state, second scratched but very fine*; Madras, with pearls to crown elongated (8), 'pineapple' cone (Pr. 56), *fine only*, and plain cone (7 vars., Pr. 57), *very fine and better*; Bombay (1), with elongated pearls and plain cone (Pr. 58), *very fine.* 11
- ∴ In cataloguing, Pridmore's tickets have been followed, though the diameters of the coins of Madras and Bombay do not relate to the Pridmore catalogue in that the Madras pieces are 30.72 - 30.85 mm and the Bombay piece 30.91 mm.
- 109\* 1862, Bombay, *obv.* as the Proof or Pattern, lot 107, with double band to crown (Pr. 53), *rev.* Type II, 30.9 mm (Pr. 59). *Obverse marked but nearly extremely fine (lustrous), reverse extremely fine, very rare.* 1
- 110 1862 (4), all Calcutta: Type B/III (Pr. 60), *very fine, rare*; Type A/II (3 - Pr. 62, 63, 64), *last very fine, others extremely fine, first noted as 'an experimental issue with delicate engraving, 30.65 mm, very rare'.* 4
- 111 1862 (3), all Calcutta: Type A/III (Pr. 65), *good fine, rare*; Type A/I (2, Pr. 66), both with 'crescent', *extremely fine and nearly mint state.* 3
- 112 1862, Bombay, dot dated (5): B/II,  $\frac{1}{0}$  = 1863/4 (Pr. 69), *almost extremely fine*; B/II,  $\frac{2}{0}$  = 1864/5 (Pr. 71), *extremely fine*; B/II,  $\frac{2}{3}$  = 1865/6 (Pr. 74), *centres a little weak with planchet marks across bust, but very fine*; B/II  $\frac{0}{3}$  = 1865/6 (Pr. 77), *almost extremely fine*; A/I,  $\frac{0}{4}$  = 1866/7 (Pr. 78), *very fine.* 5

## LOT

- 113 1862, Bombay, dot dated (5): A/II,  $0/4 = 1866/7$  (Pr. 79), *good very fine*; B/I,  $0/4 = 1866/7$  (Pr. 80), *almost extremely fine*; B/II,  $0/4 = 1866/7$  (Pr. 81), *almost very fine*; A/II,  $0/5 = 1867/8$  (Pr. 85), *good very fine*; A/II,  $0/6 = 1868/9$  (Pr. 86), *tarnished, almost extremely fine.* 5
- 114 1862, Bombay, dot dated (6): A/II,  $0/7 = 1869/70$  (Pr. 87), *almost very fine*, and another, similar, with 'crescent', *almost extremely fine*; B/II,  $0/7 = 1869/70$  (Pr. 88), *very fine*; A/II,  $1/7 = 1870/1$ , with wide rims, 31.1 mm (Pr. 90), *good very fine*; A/II,  $0/10 = 1872/3$  (Pr. 93), *good very fine*; A/II,  $1/10 = 1873/4$  (Pr. 95), *fair.* 6
- 115 1862, Bombay, dot dated (5): A/II,  $0/1$ , a mint error (p.115, note 10),  $1873/4$  (Pr. 97), *very fine*; A/II,  $1/1 = 1873/4$  (Pr. 99), and another, similar, perhaps with 'crescent', *both nearly extremely fine*; A/II,  $1/2 = 1874/5$  (Pr. 103), *almost extremely fine*; C/II,  $1/2 = 1874/5$  (Pr. 105), *almost extremely fine.* 5
- 116\* 1863, Proof or Pattern, Royal Mint, *obv.* with double band to crown, as lots 107 and 109, *rev.* dated 1863, edge plain (Pr. 106; cf. Pr. 53 (R.M.) and Pr. 59 (Bombay)). *Brilliant and extremely rare.* 1
- 117 1867, Proof or Pattern, Royal Mint, similar to lot 102 but hair plait differs, lower band to crown plain and embroidery to bodice thick, L.C.W. incuse on truncation, edge plain (Pr. 108). *Brilliant but polished and lacquered, extremely rare; ex Farouk (2386).* 1
- 118 1867, Proof or Pattern, Royal Mint, as last but initials omitted (Pr. 109). *Brilliant but polished and lacquered, extremely rare; ex Farouk (2386).* 1
- 119\* 1867, Proof or Pattern, Calcutta Mint, as last but with edge grained (Pr. 110). *Obverse with very slight marks, brilliant and toned, extremely rare; ex J. G. Murdoch (213), H. Montagu (144) and Virgil M. Brand Collections.* 1
- 120\* 1867, Proof or Pattern, Royal Mint, uniface impressions in tin of an *obv.* and a *rev.* die from which no proof has been traced (Pr. 111). *Minor marks, brilliant and extremely rare.* 2



## Lot

- 121 Dated Series, Calcutta (3), 1874-1876, all A<sup>1</sup>/I (Pr. 112 - 114).  
*Extremely fine or better.* 3
- 122 Dated Series, Bombay (7), 1874 (3), C<sup>1</sup>/II and A<sup>2</sup>/II (2), one  
with bead, *rare*, 1875 (3), C<sup>1</sup>/II, with bead, and A<sup>2</sup>/II  
(2), one with bead, 1876, A<sup>2</sup>/II, with bead (Pr. 141-147).  
*Last two nearly extremely fine, others very fine or better* 7
- Victoria Empress**
- 123 Dated Series, Calcutta (9): 1877, 1878, 1879, 1880, 1881, *almost  
very fine*, 1882, 1883, *rough surfaces*, 1884, *very fine*,  
1885, all A<sup>1</sup>/I (Pr. 115 - 120, 122 - 124), *except as stated,  
extremely fine or nearly so*; Restrike Proof, 1882, C<sup>2</sup>/I  
(as Pr. 121), *a brilliant early striking, ex Virgil M. Brand  
Collection.* 10
- 124 Dated Series, Calcutta (7): 1886, 1887, both A<sup>4</sup>/I, 1897-1891,  
all C<sup>3</sup>/I (Pr. 126 - 132), *mostly nearly extremely fine*;  
Restrike Proof, 1885, C<sup>2</sup>/I (as Pr. 125), *a brilliant early  
striking, ex Virgil M. Brand Collection.* 8
- 125 Dated Series, Calcutta (7): 1892, 1893, *fine*, 1897, *very fine*,  
1898, 1900, 1901, all C<sup>3</sup>/I, and 1901, A<sup>4</sup>/I, *very fine* (Pr.  
133, 134, 136 - 140). *Except as stated, extremely fine or  
nearly so.* 7
- 126 Dated Series, Bombay (9): 1877 (3), A<sup>3</sup>/II, without bead, *fine*,  
A<sup>2</sup>/II, A<sup>3</sup>/I, *rare*, 1878 (3), A<sup>3</sup>/II (2 vars.), A<sup>3</sup>/I, *very  
fine*, 1879 (3), A<sup>3</sup>/II (2 vars.), *one very fine*, A<sup>3</sup>/I, *very  
fine* (Pr. 148 - 151 (2), 152, 153 (2), 154), *except as  
stated, nearly extremely fine*; a modern Restrike Proof,  
1878, A<sup>3</sup>/II, without bead (as Pr. 151), *brilliant.* 10
- 127 Dated Series, Bombay (14): 1880 (2), A<sup>3</sup>/II, A<sup>3</sup>/I, *nearly ex-  
tremely fine and extremely fine*, 1881, A<sup>3</sup>/II, *fine*, 1882  
(2), A<sup>3</sup>/II, A<sup>3</sup>/I, *good very fine and extremely fine*, 1883  
(4), all A<sup>3</sup>/I, without bead, *rare*, and with bead, *both fine*,  
and with B in relief at top (2), with bead and without  
bead, *fine and almost extremely fine*, 1884 (3), A<sup>3</sup>/II (2),  
without bead, *fair*, B in relief at bottom, *good very fine*,  
*rare*, and A<sup>3</sup>/I, B in relief at top, *extremely fine*, 1885 (2),  
A<sup>3</sup>/II, A<sup>3</sup>/I, both with B in relief at top, *extremely fine  
and nearly so* (Pr. 155 - 157, 159 - 169). 14

## LOT

128 Dated Series, Bombay (10), 1885, C<sup>2</sup>/I, B incuse, *very fine*, 1886, C<sup>2</sup>/I, B incuse, 1887 (4), C<sup>2</sup>/I (3), B in relief, B incuse and B incuse reversed and A<sup>3</sup>/I, B incuse reversed, *very fine*, 1888 (2), both C<sup>2</sup>/I, B in relief and B incuse, *very fine*, 1889 (2), both C<sup>2</sup>/I, B in relief and B incuse (Pr. 170 - 172A, 173 (2) - 177). *Except as stated, extremely fine or nearly so.* 10

129 Dated Series, Bombay (10): 1890, C<sup>2</sup>/I, B incuse, 1891, C<sup>2</sup>/I, B incuse, 1892 (2), both C<sup>2</sup>/I, B in relief, *very fine*, and B incuse, 1893, 1897, 1898, all C<sup>2</sup>/I with B incuse, 1900 A<sup>3</sup>/I, B incuse, 1901 (2), A<sup>3</sup>/I and C<sup>2</sup>/I, both B incuse (Pr. 178 - 184, 186 - 188), *except as stated, extremely fine or nearly so*; an early Restrike Proof, 1898, A<sup>3</sup>/I, B incuse (as Pr. 185), *brilliant, ex Virgil M. Brand Collection.* 11

**Edward VII**

130 Calcutta (8), all without mint mark, 1903-1910 (Pr. 189-196) and Bombay (9), with B in relief (1), 1903 (Pr. 198), *rare*, with B incuse (8), 1903-1910 (Pr. 199-206). *Extremely fine. or nearly so, some better.* 17

131\* 1903, Proof, Bombay, with B in relief on cross pattée of crown, edge grained (Pr. 197). *Minor marks, brilliant and toned, very rare.* 1

132 1903, Bombay, with B in relief below cross pattée (Pr. 198). *Rather marked, otherwise lustrous extremely fine (noted as proof), rare.* 1

**George V**

133 Calcutta (10), all without mint mark, 1911-1920, (Pr. 207 - 216) and Bombay (10), all with bead below lotus, 1911-1920 (Pr. 217 - 226). *Extremely fine or better.* 20

134 Bombay (2), 1921 and 1922 (Pr. 227, 228). *Extremely fine and nearly so, noted as very rare and extremely rare.* 2

135\* 1936, Proof, Calcutta without mark (Pr. 230). *Brilliant and very rare, a Proof only date.* 1

## LOT

## George VI

- 136 Standard Silver, with bust in lower relief (Type II) and edge grained (3), all Bombay, 1938 (2), one without bead, 1939, *rare* (Pr. 233 - 235) and 500 Fine or Quarternary Standard with security edge (13), Bombay (11), 1940, 1941 (2 vars.), 1942, 1943 (4), one with star centre to lotus, 1944 (2 vars.), 1945 (Pr. 237 - 241 (3), 243 - 246) and Lahore, with L (2), 1944, 1945 (Pr. 247, 248), *both rare. Extremely fine or nearly so, some better* 16

## HALF-RUPEE

## Victoria Queen

- 137\* 1861, Pattern or Proof, Royal Mint, by L. C. Wyon, types as lot 103, edge plain, 5.53 grams, 24.3 mm (Pridmore lists, no. 249, a thick flan striking of 7.75 grams (see lot 231), but not a normal flan striking though he acquired this piece in 1973). *Polished and lacquered, otherwise brilliant, extremely rare; ex Farouk (2386).* 1
- 138 1861, Pattern or Proof, Royal Mint, similar to last but last numeral of date further away from 6 and slightly higher, edge plain, 5.67 grams, 24.0 mm (Pr. 250). *Slightest wear on the high points, otherwise brilliant, extremely rare.* 1  
*∴ For Pr. 251, 253 and 256, see under Proofs, lots 232 234 and 235.*
- 139 1862 (7), Calcutta (4), Dass/II (2), A/II, A/I (Pr. 252 (2), 254, 255) and Bombay (3), B<sup>1</sup>/II (2), long and short beads, and B<sup>2</sup>/II (Pr. 258 (2), 259). *Mostly nearly extremely fine.* 7
- 140 Dated Series (6), Calcutta (2), both 1875 A/I, date varies, *one very fine* (both Pr. 260) and Bombay, with bead (4), 1874 (2), B<sup>1</sup>/II, B<sup>2</sup>/II, 1875, B<sup>2</sup>/II *very fine*, and 1876, B<sup>2</sup>/II (Pr. 284 - 287). *Except as stated, almost extremely fine.* 6

## Victoria Empress

- 141 Dated Series, Calcutta (18), all A/I, without mark (3), 1877, *very fine*, 1878 (2), *one noted as proof*, and with C incuse in whorl (15), 1879, *very fine*, 1881, 1882, 1885, *very fine*, 1886, 1887, *very fine*, 1888, 1889, *very fine*, 1892, 1893, 1894, *very fine*, 1896, *very fine*, 1897, *fair*, 1898, *fine*, 1899, *very fine* (Pr. 261 - 263, 265 - 266, 269 - 273, 276 - 283). *Except as stated, extremely fine or nearly so* 18

Lot

- 142 Dated Series, Bombay (17), with bead (5), 1877, B/II, 1881 (2), A/II, *very fine*, B<sup>2</sup>/II, 1882, B<sup>2</sup>/II, 1884, A/II, *very fine*, without mark (2), 1884, 1888, both A/II, with B in relief, A/II (5), 1885, *very fine*, 1886, 1887, 1888, 1889, *very fine*, and with B incuse, A/I (5), 1892, 1893, 1894, *all extremely fine*, 1897, *fine*, 1899 (Pr. 288, cf. 288A, 289, 290, 292-299, 302-305, 307). *Except as stated, almost extremely fine.* 17
- 143 Restrike Proofs (4): Calcutta (3), all A/I, 1890, 1891, 1897 (as Pr. 274, 275, 280), *first two brilliant, third polished and lacquered but (unusually) rims not filed as is usual with restrikes, all ex Farouk (2387);* Bombay 1897, A/I with B incuse (as Pr. 305), *brilliant, ex Virgil M. Brand Collection.* 4

**Edward VII**

- 144 Calcutta, without mark (5), 1905, 1906, 1907, 1908, *very fine*, 1910, and Bombay, with B incuse (4), 1906, 1907, 1909, 1910 (Pr. 309 - 317). *Except as stated, extremely fine or nearly so.* 9

**George V**

- 145 Calcutta (14), 1911, 1912, 1913, *fine*, 1914, 1916, 1921, 1922, 1923, 1925, 1926, 1927, 1933, 1934, 1936 (Pr. 318-321, 323-326, 328 - 330, 333 - 335) and Bombay (14), 1912-1914, 1916-1919, 1922-1926, 1928, 1936 (Pr. 336-338, 340-350). *Except as stated, mostly extremely fine or better.* 28

**George VI**

- 146 Standard Silver (4), Bombay (2), 1938, 1939, both with normal relief, and Calcutta (2), both 1939, normal and low relief (Pr. 351, 352, 363, 364); 500 Fine or Quarterinary Standard (12), with edge grained (2), both 1940, Bombay and Calcutta (Pr. 354, 365) and with security edge (10), Bombay, with bead (7), 1941, 1942 (2 vars.), 1943, 1944 (2 vars.), 1945 (Pr. 355-361) and Lahore with L (3), 1943, 1944, 1945 (Pr. 367-369). *Extremely fine or nearly so.* 16
- 147\* 1943, Proof or Pattern, Lahore, with L incuse on thistles (Pr. 366). *Brilliant and excessively rare; ex A. P. Spencer Collection.* 1



LOT

## QUARTER-RUPEE

**Victoria Queen**

- 148 1862 (4), Calcutta, 19.4 mm, Bombay, 19.8 mm and Madras, 19.9 mm (2), one with 1 in VICTORIA (Pr. 376-378A); Dated Series (6), all A/I, Calcutta, without mark (3), 1874, 1875, *very fine*, 1876, all 19.5 mm, and Bombay (3), with bead, 1874, and without mark (2), 1875, 1876, all 19.8 mm (Pr. 379-381, 405-407). *Except as stated, extremely fine or nearly so.* 10

∴ For Pr. 370, 371, 372 and 374, see under Proofs, lots 231, 232, 234 and 235.

**Victoria Empress**

- 149 Dated Series, Calcutta (22), without mark (3), 1877, B/I, 1878, C/II, *both very fine*, 1888, C/II (Pr. 382, 383, 393) and with C incuse (19), all C/II, 1879, 1880, *fine*, 1880-1887, 1889, 1890, 1891, 1893, 1894, 1896, *very fine*, 1897, 1898, 1900, 1901 (Pr. 384-392, 394-396, 398-404). *Except as stated extremely fine or nearly so.* 22
- 150 Dated Series, Bombay (24), with bead (9), 1877 (2), A/I, B/I, 1881 (2), A/II, B/II, 1882 (3), A/I, B/II, C/I, *fine*, 1883 (2), B/I, C/II, *very fine*, with B in relief (6), 1884 (2), B/I, C/I 1885, B/I, 1886, 1887, 1888, all C/II, and with B incuse (9), 1888, 1889, 1890, *very fine*, all C/II, 1891, 1892, 1893, *very fine*, 1894, 1897, 1898, all C/I (Pr. 408-415A, 416-425, 427-431). *Except as stated, extremely fine or nearly so* 24
- 151 Bombay (2), 1891, without mark and 1892 (Pr. 426, 427), *both mint state, labelled as Proofs (Pr. 426 doubtless listed from this coin), first ex Virgil M. Brand Collection; Restrike Proofs (3), Calcutta, 1890 (as Pr. 395) and Bombay (2), 1894, 1898 (as Pr. 429, 431), brilliant, last two ex Virgil M. Brand Collection.* 5

**Edward VII**

- 152 Calcutta, without mark (7), 1903-1908, 1910 (Pr. 432-437, 439). *Extremely fine or better.* 7

**George V**

- 153 Calcutta, without mark (12), 1911-1919, 1926, 1934, 1936 (Pr. 440-449, 452, 453), *1915 polished*, and Bombay, with bead (7), 1912-1915, 1925, 1928, 1936 (Pr. 454-460). *Except as stated, extremely fine or nearly so.* 19

Lot

**George VI**

- 154 Standard Silver, normal relief, 1939 (2), Bombay and Calcutta (Pr. 461, 472); 500 Fine or Quarternary Standard (18), with edge grained (6), Bombay, with bead (3), all 1940, normal (2) and low relief and Calcutta (3), 1940, 1942, 1943, all low relief (Pr. 462 (2), 463, 473-475) and with security edge (12), Bombay, with bead (8), 1943 (4 - 3 vars.), 1944 (2 vars.), 1945 (2 vars.) and Lahore, with L (4), 1943, 1944, 1945 (2 vars.) (Pr. 464 (2)-470, 476-479); Proof, 1943, Bombay with security edge (as Pr. 464). *Last mint state, ex A. P. Spencer Collection, others extremely fine or nearly so.* (21)

## TWO ANNAS

**Victoria Queen**

- 155 1861, Proof or Pattern, Royal Mint, by L. C. Wyon, 1.41 grams (Pr. 481). *High spots slightly rubbed, otherwise brilliant, very rare.* 1

∴ Pridmore gives the weights of Nos. 480 and 481 as 1.45 and 1.43 grams respectively: Pr. 480 in lot 231 weighs 1.43 grams and Pr. 481 in lot 232 weighs 1.42 grams. For Pr. 482-484, see under Proofs, lots 234-236.

- 156 1862 (5), Calcutta, 15.4 mm. (2), Bombay, 15.7 mm., *very fine*, and Madras, 16.0 mm. (2) (Pr. 485 (2), 486, 487 (2)); Dated Series (9), all A/I, Calcutta, 15.4 mm. (3), without mark, 1875 (2 vars.), *one very fine*, 1876, *fine*, and Bombay, 15.8 mm. (6), without mark (5), 1874 (2), 1875 (2), 1876 and with bead (1), 1876, *fine* (Pr. 489 (2), 490, 516 (2), 517 (2), 518, 519). *Except as stated, nearly extremely fine.* 14

**Victoria Empress**

- 157 Dated Series, Calcutta (25), without mark (4), 1877 (2), A/I, B/II, 1878, B/II, 1888, B/II (Pr. 491-493, 503), with C incuse and B/II (21), 1879-1887, 1889-1898, 1900, 1901 (Pr. 494-502, 504-515), *very fine or nearly extremely fine, later dates better*; a Restrike Proof, 1882, with C incuse but a Bombay obverse, *brilliant (rims not filed), ex Virgil M. Brand Collection.* 26

## LOT

- 158 Dated Series, Bombay (31), with bead (8), 1877, A/I, 1881 (2), A/II, B/II, 1882 (2), A/II, B/II, 1883 (2), A/I, B/II, 1884, B/I (Pr. 520, 523, 524, 526, 527, 529, 530, 532), without mark (3), 1884, A/I, 1885, A/I, 1890, B/II (Pr. 531, 536A, 543), with B in relief (7), 1884 (3), A/I (2), with and without bead, B/I, 1885, A/I, 1890, 1900, 1901, all B/II (Pr. 533-535, 537, 544, 553, 554), and with B incuse (13), 1886-1894, 1896-1898, all B/II, 1901, B/I (Pr. 539-542, 545-552, 555), *very fine or nearly extremely fine, later dates better*; a Restrike Proof, 1897, B/II with B incuse (as Pr. 551), *brilliant (rims not filed)*. 32

**Edward VII and George V**

- 159 Calcutta, without mark (14), 1903-1908, 1909, *very fine*, 1910 (2 vars.), 1911, 1912, 1914, 1916, 1917 and Bombay, with bead (4), 1912-1915 (Pr. 556-563 (2), 564, 565, 567, 569-574), *except as stated, mostly extremely fine or better*; a Restrike Proof, 1913, Calcutta (as Pr. 566), *brilliant (rims filed)*. 19

**Copper and Bronze**

## HALF-ANNA

**Victoria Queen**

- 160 1862 (8), Bust A with 4½ panels to bodice (5), Calcutta, 31.3 mm., Madras, 30.7 m.m. (3 vars.), *one extremely fine*, and Bombay, 30.4 mm., *fine and rare* (Pr. 576, 577 (3), 578), and Bust B with four panels to bodice and rev. 'cone' flower buds (3), 1862, 1875, 1876, all Calcutta (Pr. 581, 583, 584), *except as stated, very fine or nearly extremely fine*; a Calcutta Proof, 1862, types as last (Pr. 582), *very slight marks in obverse field, otherwise brilliant, rare*. 9

∴ For Pr. 575 and 579, see under Proofs, lots 233 and 237.

**Victoria Empress**

- 161 1877 (2), Calcutta, Bust C and Bombay, Bust B (Pr. 585, 586), *very fine and extremely fine*; Proof, 1878, Calcutta, Bust C (Pr. 587), *face pitted and fields show evidence of rusty dies, otherwise brilliant*; Proof 1879, Calcutta, similar (Pr. 588), *obverse dull but with original colour, reverse toned, almost mint state*; Proof (?) 1884, Bombay, Bust B (Pr. 589), *appearance, especially the rims, similar to a currency issue, but listed by Pridmore as a proof only date*; Restrike Proof, 1891, with Bust B, *polished and lacquered, otherwise brilliant*. 6

Lot

**Edward VII**

- 162\* Proof or Pattern, 1904 (Pr. 595). *Planchet marks on reverse, otherwise brilliant with dark tone, extremely rare, the denomination not issued for currency.* 1

## QUARTER-ANNA

**Victoria Queen**

- 163\* 1861, Proof or Pattern, Calcutta, with 4 $\frac{3}{4}$  panels to bodice, error Roman I in date (Pr. 597), *brilliant and very rare*; 1862, Restrike Proof, types similar (as Pr. 598), *polished and lacquered, otherwise brilliant.* 2

∴ For Pr. 596 and 605, see under Proofs, lots 233 and 237.

- 164 1862 (7), Bust A with single flower in bottom panel of bodice (5), Calcutta (2), 26.3 mm. and 25.4 mm., last with V in relief in the centre of the bust on the line of the truncation, Bombay, 25.5 mm. (2), one with bead below date, and Madras, 25.5 mm., no marks, *corroded*, Bust B, Calcutta, 25.3 mm., with V and rev. 'rotated' (Pr. 600-604, 606), *extremely fine or nearly so*, and a Proof, similar to last (Pr. 607), *blotchy tone (lacquering?)*, *otherwise brilliant*; Dated Series (4), Calcutta, Bust B and rev. 'rotated' (3), 1874, 1875, 1876, and Bombay, Bust A and rev. normal, 1875 (Pr. 608-610, 635), *last very fine, others nearly extremely fine.* 11

**Victoria Empress**

- 165 Dated Series (35), Calcutta with rev. 'rotated' (26), without mark (16), 1877, 1878, 1888-1901 (1898 *fine*), with C on bead (sometimes worn away, p. 145) (11), 1879 (3, *one labelled as Proof*), 1880, 1882, *very fine*, 1883, 1884, 1885, 1886 (2), 1887, and Bombay with rev. normal (8), 1877, 1882, *fine*, 1883, 1884, *very fine*, 1886, 1887, 1888, *both very fine*, 1889 (Pr. 611-613 (3), 614-619 (2), 620-634). *Except as stated, mostly extremely fine or nearly so.* 35

**Edward VII**

- 166 Calcutta (9), copper (4), 1903-1906 and bronze (5), 1906-1910 (Pr. 646, 647, 649-655), *mostly extremely fine or nearly so*; Proof or Pattern, 1904, in bronze, 4.68 grams (Pr. 648), *dull with two carbon spots on face, but extremely fine and very rare, the bronze not introduced until 1906.* 10



Lot

**George V**

- 167 Calcutta, without mark (18), 1911-1914, 1916-1920, 1926, 1828-1931, 1933-36 and Bombay with bead (8), 1924-1928, 1930 (2 vars.), 1936 (Pr. 656, 658-665, 667, 669-682 (2), 683), *mostly extremely fine or better*; Proof, 1911, with redesigned elephant (Pr. 657), *brilliant and extremely rare.* 27

**George VI**

- 168 Calcutta (7), Type I (4), 1938 (2), 1939 (2), Type II (3), 1940, 1941, 1942 and Bombay (9), Type I (5), 1938 (2), 1939 (2), 1940, Type II (4), 1940 (2), 1941, 1942 (Pr. 684 (2), 685 (2), 686-689 (2), 690 (2), 691, 692 (2), 693, 694), *mostly extremely fine or better*; Proof, 1940, Calcutta, Type II (Pr. p. 197), *brilliant but lacquered*; Restrike Proof Mules of Bombay (3), 1938, 1939, both Type II, and 1943, Type I, *all brilliant but lacquered.* 20

## ONE PICE (or QUARTER-ANNA)

- 169 Calcutta, without mark (2), 1945 FC, 1947 HC, Lahore, with L (3), 1944 HC (2 vars.), 1945 FC, Bombay, with bead or diamond (6), 1943 RC, diamond, 1644 (2), HC diamond and FC bead, 1945 FC (2), diamond and bead, 1947 HC, and Pretoria HC with bead (5), 1943 (3 vars.), 1944 (2 vars.) (Pr. 696-698 (2), 699-702 var., 703 (2), 704, 705 (3), 706 (2)); *extremely fine or better*; Restrike Proofs (3), all Calcutta, without mark, 1944 HC, a Proof only date, 1945 FC, 1947 HC (as Pr. 695-697), *brilliant but lacquered.* 19

## HALF-PICE

**Victoria Queen and Empress**

- 170\* 1861, Royal Mint, by L. C. Wyon, struck on a thick flan, 4.63 grams, 21.3 mm. (cf. lot 231), bodice with 4½ panels (Pr. 707). *Minor marks and flaw on neck, otherwise brilliant, very rare.* 1
- 171 1862 (4), all Calcutta, a Restrike Proof, from Wyon's dies as last (Pr. 709), *brilliant*, and from remodelled dies, with differing drapery and leaves anti-clockwise (3), currency (2, both Pr. 711), *very fine and extremely fine*, and a bronze Proof (Pr. 712), *brilliant and rare*; Dated Series, as Empress (18), all Calcutta, a bronzed Proof, 1878 (Pr. 716), *brilliant and toned, rare*, and currency (17), 1885-1901 (Pr. 717-723, 725-734), *mostly extremely fine, some with original colour.* 22

Lot

**Edward VII**

- 172 Calcutta (10), copper, 3.23 grams (5), 1903 (2), currency and Proof, 1904-1906, and bronze, 2.43 grams (5), 1906-1910 (Pr. 735 (2), 736, 738-744). *Mostly extremely fine or better (1905 fine), several with original colour.* 10

**George V**

- 173 Calcutta (24), 1912-1922 and 1924-1936 (Pr. 745-755, 757-769). *Mostly extremely fine or better, several with original colour.* 24

**George VI**

- 174 Calcutta, without mark (3), 1938-1940 and Bombay, with bead (1), 1939, all Type I (Pr. 770-773), *extremely fine or better*; Restrike Proofs (4), Calcutta (2), 1938, 1939, both Type I, and Bombay (2), both 1942, Type I (a mule) and Type II (Pr. p. 201), *brilliant.* 8

TWELFTH-ANNA

**Victoria Queen and Empress**

- 175 1862 (11), all Calcutta, a Restrike Proof from Wyon's dies (Pr. 776), *brilliant (lacquered)*, a Proof, from remodelled dies with differing drapery and leaves for stars (Pr. 779), *brilliant and toned, rare*, and currency (9), Calcutta, 17.5 mm (3, all Pr. 780), Madras, 17.7 mm (3, all Pr. 781) and Bombay, 17.9 mm. (3, all Pr. 782); Dated Series (31), as Queen (3), 1874, 1875, 1876, all Calcutta (Pr. 783-785) and as Empress (28), Calcutta, with Bust B (21), 1877, 1878, 1882, 1883, 1885-1893 (2), 1894-1899, 1901 and Bombay with Bust A (7), 1877, 1883, 1884, 1886-1889 (Pr. 786-798 (2), 799-805, 809, 811-816), *extremely fine or better.* 42

**Edward VII**

- 176 Calcutta (9), copper, 2.49 grams (4), 1903-1906 and bronze, 1.62 grams (5), 1907 (2)-1910 (Pr. 818-821, 823 (2)-826). *Extremely fine or better, mostly with original colour.* 9

**George V**

- 177 Calcutta, without mark (24), 1912-1921, 1923-1936 and Bombay, with bead (7), 1923-1928, 1936 (Pr. 827-857), *mostly extremely fine or better, with original colour*; a Proof, Calcutta, 1929 (as Pr. 843), *brilliant and toned*, and a Restrike Proof, Bombay, 1924 (as Pr. 852), *brilliant (lacquered).* 33

LOT

**George VI**

- 178 Calcutta, without mark (1), Type I, 1939 and Bombay with bead(s) (4), Type I, 1939 and Type II (3), 1939, *very fine*, 1941, 1942 (Pr. 859-863), *except as stated, extremely fine or better*; a Proof, Calcutta, Type I, 1939 (Pr. 859), *brilliant and toned*; Restrike Proofs (4), Calcutta, Type I (2), 1938, 1939 and Bombay (2), 1941, 1942, both Type I (mules), *brilliant (lacquered)*. 10

**Pure Nickel**

ONE RUPEE, HALF-RUPEE and QUARTER-RUPEE

**George VI**

- 179 Rupees (2), both 1947, Lahore and Bombay,  $\frac{1}{2}$ -Rupees (2), 1946, 1947 and  $\frac{1}{4}$ -Rupees (2), 1946, 1947, all Bombay (Pr. 864-869), *nearly extremely fine*; Restrike Proof Set, 1947, Bombay, *brilliant (lacquered)*. 9

**Cupro-Nickel and Nickel-Brass**

EIGHT ANNAS

**George V**

- 180 Calcutta, without mark (1), 1919 and Bombay, with bead (2), 1919, 1920 (Pr. 870, 872, 873), *last very fine, others nearly extremely fine*; Proof, Calcutta, 1919 (as Pr. 870), *brilliant and rare, ex A. P. Spencer Collection*, and a Restrike Proof, 1920, *a brilliant proof only date*. 5

FOUR ANNAS

**George V**

- 181 Calcutta, without mark (2), 1919, 1920 and Bombay, with bead (3), 1919-1921 (Pr. 874, 875, 877-879), *extremely fine or better*; Proof, Calcutta, 1920 (cf. Pr. 875), *brilliant and rare, ex A. P. Spencer Collection*. 6

## LOT

## TWO ANNAS

**George V and George VI**

- 182 George V (23), Calcutta, without mark (14), 1918-1920, 1923-1930, 1933-1935 and Bombay, with bead (9), 1918, 1923-1928, 1935, 1936 (Pr. 880-894, 896-903); George VI (20), Calcutta and Lahore (9), cupro-nickel (4), Type I, 1939, *rare*, Type II (3), 1939, 1940, 1941, nickel-brass (2), 1944 (Lahore), 1945 (Calcutta), cupro-nickel (3), 1946 (Lahore), 1946, 1947 (both Calcutta) and Bombay (11), cupro-nickel (4), Type I, 1939, Type II (3), 1939, 1940, 1941, nickel-brass (5), 1942 (2 vars.)-1945, cupro-nickel (2), 1946, 1947 (Pr. 904-923), *mostly very fine or extremely fine*: Restrike Proofs (6), all Type II, Calcutta (2), cupro-nickel, 1940, nickel-brass, 1945 and Bombay (4), all cupro-nickel, 1939, 1941, 1946, 1947, *brilliant*.

49

## ONE ANNA

**Edward VII, George V and George VI**

- 183 Edward VII (4), all Bombay with B incuse, 1907-1910 (Pr. 926-929); George V (28), Calcutta without mark (10), 1924-1930, 1933-1935 and Bombay (18), without mark (10), 1912-1920, 1923, and with bead (8), 1924-1926, 1927 (2 vars.), 1928, 1935, 1936 (Pr. 930-939, 942-955 (2), 956-958); George VI (21), Calcutta and Lahore (10), cupro-nickel (4), Type I (2), 1938, 1939 and Type II (2), 1940, 1941, nickel-brass (4), 1942-1945, cupro-nickel (2), 1946, 1947 and Bombay, with head (11), cupro-nickel (4), Type I (2), 1938, 1939, Type II (2), 1940, 1941, nickel-brass (5), 1942-1945 (2 vars.), cupro-nickel (2), 1946, 1947 (Pr. 959, 960, 962-967, 969-972, 974-979 (2), 980, 981), *several worn but mostly very fine or extremely fine*: Restrike Proofs (8), all Type I, Calcutta (4), cupro-nickel (2), 1940, 1946, nickel-brass (2), 1942, 1943 and Bombay (4), cupro-nickel (3), 1939, 1941, 1947 and nickel-brass, 1945, *brilliant, mostly mules*.

61



## LOT

HALF-ANNA

**George VI**

- 184 Calcutta and Lahore, with dots by INDIA (7), nickel-brass (5), 1942, 1943, 1944 (2), 1945 (perhaps Bombay, but without test marks), cupro-nickel, with dashes by date (2), 1946, 1947, Bombay (4), nickel-brass, without dots by INDIA (1), 1942, cupro-nickel (3), dot within dashes (1), 1946, and dashes (2), both 1947 with test marks (Pr. 983-985 (2), 986 (or 991), 987 (or 988), 989, 990, 992, 992A (2)), *extremely fine or nearly so*; Restrike Proofs (7), Calcutta and Lahore (3), cupro-nickel (1), 1940, nickel-brass (2), 1943, 1944 and Bombay (4), nickel-brass (2), 1942, 1945, cupro-nickel (2), 1946, 1947, *brilliant*. 18
- 185\* 1940, Proof or Pattern, Calcutta, in cupro-nickel (Pr. 982), *brilliant and extremely rare (illustrated), ex A. P. Spencer Collection*; 1942, a Bombay trial striking (types as Pr. 990) but composition 70% copper, 10% nickel and 20% zinc (R.M.), *one edge scraped, good very fine, not listed by Pridmore*. 2

**The Treaty Coinages of the Native States****Alwar**

- 186 Rupees (6), 1788 (error), *rare*, 1877, *stained*, 1878, *very fine*, 1880, 1882, *good very fine*, 1891 (Pr. 993, 994, 996, 997, 998, 1000). *Except as stated, extremely fine or nearly so*. 6

**Bikanir**

- 187 Rupees (2), 1892, 1897, Quarter-Anna, 1895 and Half-Pice, 1894 (Pr. 1003, 1005, 1007, 1011), *silver very fine, copper better*; Proof Half-Pice, 1894 (Pr. 1012), *brilliant and rare*. 5

**Dewas**

- 188 SENIOR BRANCH, Quarter-Anna and Twelfth-Anna, 1888 (Pr. 1015, 1020), *very fine with ink number on reverse, and fine*; Proofs, similar (2-Pr. 1016, 1021), *brilliant and rare*. 4
- 189 JUNIOR BRANCH, Quarter-Anna, 1888 (Pr. 1017), *fair*; Proof Quarter-Anna and Twelfth-Anna, 1888 (Pr. 1018, 1024), *brilliant and rare*. 3

LOT

**Dhar**

- 190 Quarter-Anna, Half-Pice and Twelfth-Anna, 1887 (Pr. 1025, 1029, 1033), *fine*; Proofs, similar (3 - Pr. 1026, 1030, 1034), *brilliant and rare*.

6

**Sailana**

- 191 Quarter-Annas (3), 1908 (2, both Pr. 1037), *brilliant mint state, one toned noted as Proof*, and 1912 (Pr. 1039), *extremely fine*.

3

**Pattern Coins and Curious Items****Victoria****Nickel**

## ONE ANNA

- 192\* Undated, a Restrike Proof from the dies of the Bombay Quarter-Rupee, with *obv.* C with foreshortened drapery (post-1886) and *rev.* I with B incuse on the stem of the flower ornament (1891-1898) but the centre inscriptions erased and replaced by a large 1, edge plain, 3.87 grams, 19.2 mm., cupro-nickel (almost certainly 75:25 E.G.V.N.) (as Pr. 1042; see p. 72). *Obverse scratched (to remove corrosion, mostly on edge), otherwise extremely fine; ex Farouk (2392)*.

1

**Silver**

## CURIOUS

- 193\* 1864, a rupee blank, neatly engraved on one side FIRST BLANK—NEW MINT—JANY. 21ST.—1864—J. A. BALLARD . M.M. and roughly scratched on the other NEW BOMBAY (Pr. 1043). *Almost extremely fine, an interesting souvenir to commemorate commencement of production at the New Bombay Mint in 1864: Col. J. A. Ballard, R.E., held the appointment of Mint Master, Bombay Mint, from 1862 to 1879 (see pp. 55, 62 and 65)*.

1

LOT

**Edward VII****Silver**

## ONE RUPEE

- 194\* 1901 (completed June or July, submitted to Royal Mint in November (see p.68)), by F. K. Wezel, *obv.* bare head right, K. W. on truncation, Latin legend EDUARDUS VII REX ET IMPERATOR, *rev.* an Indian tiger to left, value in Persian and Nagari above and below, ONE RUPEE INDIA 1901 around with crown at top and lotus flower at bottom, edge grained (Pr. 1045). *Brilliant and toned, extremely rare.* 1
- 195\* 1901, by F. K. Wezel, similar to last but values replaced by E. R. I. above tiger on *rev.* (Pr. 1046). *Lacquered with blotchy tone, extremely fine and extremely rare; ex A. P. Spencer Collection* 1
- 196\* 1906, Specimen, Calcutta, as the adopted currency issue but the edge reads DECVS. ET. TVTAMEN. in relief (Virgil, *Aeneid*, V, 262) and the top of *rev.* engraved SPECIMEN in small letters (Pr. 1047; see p.71). *Extremely fine and toned, extremely rare; ex H. M. Lingford Collection.* 1
- 197\* 1910, Calcutta, *obv.* by F. K. Wezel, modelled on G. W. de Saulles crowned effigy, but the insignia of the Order of the Garter and Order of the Bath replaced by those of the Order of the Star of India and the Order of the Indian Empire, *rev.* by P. Brown (Principal of the School of Art, Calcutta), value, in English and Persian, and date within saracenic scroll comprising rose, thistle and shamrock, with Indian lotus at top and bottom, edge grained (Pr. 1049). *Brilliant and toned, a perfect specimen, extremely rare.* 1
- ∴ *Edward VII died before this design was submitted: the reverse was adopted the next year for the coinage of George V.*

**Copper**

## QUARTER-ANNA

- 198\* 1904, Calcutta, *obv.* G. W. de Saulles crowned effigy (a Straits Settlements die, note the insignia), *rev.* by F. K. Wezel, an agricultural scene, INDIAN EMPIRE above, ONE QUARTER ANNA 1904 below, edge plain (Pridmore 1051). *Brilliant and excessively rare.* 1

Lot

**Nickel or White Metals**

(Information as to metal content by courtesy of Mr. E. G. V. Newman of IBSCC. Unless otherwise stated, cupro-nickel = 75:25).

ANNA

**Group I:** with central piercing

- 199\* 1903, Calcutta, *obv.* Imperial crown above E's entwined, INDIAN EMPIRE 1903, *rev.* two palm trees, sun rising over sea, 1 ANNA, edge plain, 3.84 grams, 22.6 mm, cupro-nickel (Pr. 1053). *Brilliant and very rare.* 1
- 200\* 1904, similar to last, but *obv.* with crown on ribbon and E's more ornate, all within circle, and *rev.* single palm tree, suns rays emanate from central hole, ANNA 1, edge plain, 3.90 grams, 22.3 mm, copper-nickel-zinc, 74:21:5 (Pr. 1054). *Slight rim flaws on reverse otherwise brilliant, very rare.* 1
- 201\* 1904, types similar to last but smaller, 3.24 grams, 21.1 mm, cupro-nickel (Pr. 1056). *Lacquered, extremely fine and very rare; ex Dr. A. N. Brushfield (227).* 1
- 202\* 1905, *obv.* type as last two coins but E's plain and angular, ANNA within quatrefoil, value in Urdu, Telugu, Nagari and Bengali around, edge plain, 3.58 grams, 21.1 mm, impure nickel (nickel 96.5, cobalt 2.5, copper 0.5, iron 0.5) (Pr. 1057). *Lacquered and with very slight marks, brilliant and very rare.* 1
- Group II:** without central piercing
- 203\* 1904, *obv.* bare head right, EDWARD VII KING & EMPEROR (a Half-Pice die), *rev.* large 1, ONE ANNA at sides, 1904 below, edge plain, 3.29 grams, 21.1 mm, cupro-nickel (Pr. 1058). *Scratches (to remove corrosion) in reverse field, otherwise brilliant, very rare.* 1
- 204\* 1904, similar to last but *rev.* large 1 narrower, edge plain, 4.54 grams, 21.2 mm, cupro-nickel (Pr. 1059). *Brilliant and very rare.* 1



## Lot

- 205\* 1904, *obv.* as last two coins, i.e. a Half-Pice die, *rev.* from the die of a Half-Pice with the centre inscription erased and replaced with a similar, but smaller, design to last, edge plain, 4.57 grams, 21.2 mm., cupro-nickel (Pr. 1060). *Lightly polished, otherwise brilliant, very rare.* 1
- 206\* 1904, *obv.* similar to last but reads AND, i.e. from the die of a Quarter-Rupee, *rev.* similar to lot 203 with value in Urdu and Nagari added by numeral, edge plain, 3.30 grams, 20.1 mm, impure nickel (Pr. 1061). *Faint die crack down face, otherwise brilliant, very rare.* 1
- 207\* 1906, *obv.* small crowned bust right, without artists initials, *rev.* as lot 202, with INDIA above and 1906 below 1 (as the adopted issue), edge with 16 raised bars, 4.03 grams, 21.1 mm, impure nickel (Pr. 1064). *Scratches both sides (to remove corrosion), otherwise extremely fine with traces of corrosion.* 1
- 208\* 1906, similar, but edge with 16 double raised bars, 3.96 grams, 21.3 mm, impure nickel (Pr. 1065). *Flan flaws on edge and rims, lacquered with traces of corrosion, otherwise brilliant, very rare.* 1
- Group III: scalloped round**
- 209\* 1905, types similar to last two coins, but effigy in lower relief and letters of the legend with better formed serifs, edge plain with 24 scallops, 3.08 grams, 20.5 mm, impure nickel (Pr. 1066). *Scratches (to remove corrosion) in two places on reverse and lacquered with brushmarks both sides, otherwise brilliant, very rare.* 1
- 210\* 1905, similar to last but rim border of dots both sides and edge with only 16 scallops, 3.16 grams, 21.5 mm, impure nickel (Pr. 1067). *Obverse corroded and reverse spotty, otherwise brilliant, very rare.* 1
- 211\* 1905, similar to last but struck in 925 SILVER, rather than the normal Indian standard of 916, 4.12 grams, 21.4 mm (Pr. 1068). *Cuts on obverse, otherwise extremely fine, extremely rare.* 1
- 212\* 1905, similar to last two coins but struck in BRONZE, 3.42 grams, 21.8 mm (Pr. 1069, noted as copper). *Mint state and extremely rare; ex A. P. Spencer Collection.* 1

## Lot

- 213\* 1905, types similar to lot 209, i.e. without borders of dots, but edge with only 12 scallops, 3.23 grams, 20.6 mm, impure nickel (Pr. 1070A). *Major corrosion, especially on reverse and edge, otherwise extremely fine, very rare.* 1
- 214\* 1905, similar to last but struck in 925 SILVER (cf. lot 211), 4.70 grams, 20.8 mm (Pr. 1070B). *Extremely fine and extremely rare.* 1
- 215\* 1906, types as lot 207, but without rims, and edge with 12 scallops, struck in 925 SILVER, 4.79 grams, 21.6 mm (Pr. 1071, not noted as in silver as the weight given would suggest). *Lacquered and with cuts on obverse, otherwise brilliant, extremely rare.* 1
- 216\* 1906, similar to last but the effigy larger and B incuse below cross on crown and raised rims both sides, 3.90 grams, 21.1 mm, cupro-nickel (Pr. 1072). *Spotty otherwise mint state, very rare.* 1
- ∴ Pridmore notes this as the approved design (No. 925) which it obviously is not: he also cross-refers No. 924 with 1070, which is without rims.

## HALF-ANNA

- 217\* 1908, *obv.* as lot 207, *rev.* AN  $\frac{1}{2}$  NA within ornate quatrefoil, value in Urdu and Nagari in spandrils, edge plain with 12 scallops, 2.26 grams, 18.0 mm, impure nickel (Pr. 1073). *Brilliant and excessively rare, intended to replace the old heavy copper coin (see p. 144).* 1
- 
- 218\* 1903, Quarter-Rupee, Calcutta, *obv.* stamped 718.93, indicating fineness, below the truncation (Pr. 1074). *Extremely fine and interesting, though almost exactly the eutectic alloy, no evidence has been traced for a contemplated change in the fineness of the standard silver currency.* 1
- 219\* 1904, Quarter-Rupee, Calcutta, struck on a 12 scalloped Anna blank, 3.17 grams, 21.1 mm, impure nickel (Pr. 1075). *Flawed rims otherwise brilliant, very rare.* 1

LOT

**George V****Nickel**

ANNA

- 220\* 1921, types as currency issue but with smaller bust and struck on a square flan, 4.41 grams, 18.5 mm, cupro-nickel (Pr. 1080). *Brilliant and extremely rare; ex A. P. Spencer Collection.* 1
- 221\* 1921, similar, but struck in BRONZE, 2.65 grams, 18.5 mm (Pr. 1081, noted as copper). *Almost mint state, extremely rare; ex A. P. Spencer Collection.* 1
- 222\* 1929, types similar to last, edge plain with 12 scallops, 3.91 grams, 21.0 mm, cupro-nickel (Pr. 1083). *Mint state and extremely rare; ex A. P. Spencer Collection.* 1
- 223\* 1929, similar to last with finer lettering and broad rims, 3.88 grams, 21.0 mm, cupro-nickel (Pr. 1084). *Brilliant and extremely rare; ex A. P. Spencer Collection.* 1

**George VI****Silver**

ONE DOLLAR

- 224\* 1941, Calcutta, by A. P. Spencer, *obv.* crowned head left, GEORGE VI KING EMPEROR, *rev.* large 1 in centre with country, value in Urdu and English, and date in five lines (top and bottom line curved), edge grained, 14.72 grams, 33.7 mm (Pr. 1088A). *Brilliant and extremely rare; ex A. P. Spencer Collection.* 1
- 225\* 1941, Calcutta, by A. P. Spencer, similar but *rev.* numeral 1 is to left, and the top and bottom lines of the inscription are straight, 14.56 grams, 33.7 mm (Pr. 1089). *Brilliant and extremely rare; ex A. P. Spencer Collection.* 1

**Bronze**

ONE PICE

- 226\* 1943, Calcutta, by A. P. Spencer, *obv.* Imperial crown dividing date 19-43, . ONE . PICE . INDIA ., *rev.* a wreath divided into four parts by three ribbon ties and a crown, on each part value in native script incuse, 1.89 grams (large central hole), 21.3 mm (Pr. 1091). *Brilliant (lacquered), extremely rare; ex A. P. Spencer Collection.* 1

LOT

**Nickel**

## TWO ANNAS

227\* 1937, Calcutta mule, *obv.* crowned bust of George V left, GEORGE V KING EMPEROR, *rev.* 2 over ANNAS, INDIA and 1937 below, enclosed by a double quatrefoil, value in four native languages within, winged ornament in corners both sides, edge plain, 6.50 grams, 22.5 mm (square) (Pr. 1093). *Brilliant and extremely rare; ex A. P. Spencer Collection.*

1

228\* 1937, a similar mule but *rev.* design within serrated circular border, edge plain, 5.80 grams, 22.5 mm (square) (Pr. 1094). *Brilliant and extremely rare; ex A. P. Spencer Collection.*

1

## ONE ANNA

229\* 1938, Calcutta mule, *obv.* crowned bust of George V left, GEORGE V KING EMPEROR, all within plain double circle, *rev.* AN  $\frac{1}{2}$  NA, INDIA above and 1938 below, all within quatrefoil, edge plain, 2.89 grams, 18.8 mm (square) (Pr. 1095). *Brilliant and excessively rare; ex A. P. Spencer Collection.*

1

230\* A silver Rupee blank with a shallow groove in the centre of the edge, a test piece for the edge marking introduced in 1940 (p.190), *very fine, ex A. P. Spencer Collection; a thin white metal disc, 22.5 mm, engraved with APS monogram (Albert Pearson Spencer), very fine (illustrated).*

2

**Proof Sets**

(including Proofs, part Sets and Out-of-Metals)

231 1860-1, Royal Mint, Proof or Pattern Silver Set, by L. C. Wyon, struck on thick flans, comprising Rupee, 1860, 17.69 grams, Half-Rupee, 7.74 grams, Quarter-Rupee, 3.83 grams, and Two-Annas, 1.43 grams, all dated 1861 and without signature, edges plain (Pr. 48, 249, 370, 480). *Obverse of Rupee dull with very slight wear on high points, otherwise brilliant and extremely rare; ex J. B. Caldecott (169).*

4

∴ The weights of the Two-Annas are discussed in the note following lot 155.



## LOT

- 232 1861, Calcutta, Proof Silver Set, comprising Rupee, *rev.* top flower differs, Half-Rupee, *obv.* central jewel encircled by pearls, Quarter-Rupee and Two-Annas, edges plain (Pr. 52, 251, 371, 481). *Very slight marks, otherwise brilliant, extremely rare; ex J. B. Caldecott (171) and H. M. Lingford Collections.* 4
- ∴ Pridmore puts the two smaller pieces to the Royal Mint: this would not seem to be justified on the quality.
- 233 1861, Royal Mint, Proof Copper Set, by L. C. Wyon, comprising Half-Anna, Quarter-Anna, *lacks flat rims*, Half-Pice and Twelfth-Anna, edges plain (Pr. 575, 596, 708, 775). *Brilliant and toned, very rare.* 4
- 234 1862, Calcutta, Proof Silver Set, by J. Lutz, comprising Rupee and Half-Rupee, both with V in centre of base line of bust, Quarter-Rupee and Two-Annas, both with V inverted, edges normal (Pr. 61, 253, 372, 482). *Quarter-Rupee with obverse a little dull and rims lightly filed, otherwise brilliant, extremely rare; ex H. M. Lingford Collection.* 4
- 235 1862, Calcutta, Proof Silver Set, *obv.* as last and with Reverse 1, edges normal (Pr. 67, 256, 374, 483). *Brilliant and extremely rare; Quarter-Rupee and Two-Annas ex Virgil M. Brand Collection.* 4
- 236\* 1862, Calcutta, Proof Two-Annas, struck in GOLD, edge plain (Pr. 484). *Slightest marks in obverse field, brilliant and extremely rare.* 1
- 237 1862, Calcutta, Proof Copper Set, with *obv.* by J. Lutz and *rev.* by L. C. Wyon, comprising Half-Anna, V left, Quarter-Anna and Half-Pice, both with V central, and Twelfth-Anna, V inverted, edges plain (Pr. 579, 605, 710, 778). *Brilliant and very rare.* 4
- 238 1862, Calcutta, Restrike Proof Copper Set struck in SILVER, comprising Half-Anna and Quarter-Anna, *both with rims filed*, Half-Pice and Twelfth-Anna, edges plain (Pr. 580, 599, 709A, 777). *Larger pieces both lacquered, ex Farouk (2392) and smaller pieces dull, both ex Virgil M. Brand Collection, otherwise brilliant.* 4

LOT

- 239 1875, Calcutta, Proof Silver and Copper Set, comprising silver Rupee, Half-Rupee, Quarter-Rupee and Two-Annas, copper Half-Anna, Quarter-Anna, Half-Pice and Twelfth-Anna, edges normal (as Pr. 113, 260, 380, 489, 583, 609, 712, 784). *Brilliant and toned, extremely rare, the Half-Pice a Proof only date; the silver ex Dr. A. N. Brushfield (204).* 8
- 240 1877, Calcutta, part Silver Proof Set (Half-Rupee missing), comprising Rupee, Quarter-Rupee and Two-Annas, all without mark (as Pr. 115, 382, 491). *Reverse of Two-Annas stained, all with slight marks, otherwise brilliant, very rare; the Rupee ex Dr. A. N. Brushfield (207).* 3
- 241 1877 mixed Restrike Copper Proof Set, comprising Half-Anna, Bombay, Quarter-Anna and Half-Pice, both Calcutta (as Pr. 586, 611, 715), *all polished and lacquered otherwise brilliant*, Twelfth-Anna, with Bust A of Bombay but diameter 17.5 mm of Calcutta, a test mark, c. 1938-1947, behind head (see p.89) apparently not noticed by Pridmore (as Pr. 809/786), *brilliant, with dark tone.* 4
- 242 1885, Calcutta, Proof Rupee, struck in COPPER, A<sup>1</sup>/I with C incuse in bottom flower, edge grained, 9.97 grams (as Pr. 122), *obverse dull, almost mint state, extremely rare, ex H. M. Lingford Collection; a Bombay, trial striking (?) in copper, of a Half-Rupee, 1884, A/II without mark, edge grained, 4.85 grams (as Pr. 293; see p.197 and Pr. 46, note), striated surfaces (die coarsely cleaned?) and scratch in front of face, otherwise very fine, very rare.* 2
- 243 1891, Calcutta, Proof Silver and Copper Set comprising silver Rupee, Half-Rupee, Quarter-Rupee and Two-Annas, copper Half-Anna, Quarter-Anna, Half-Pice and Twelfth-Anna, edges normal (as Pr. 132, 275, 396, 506, 591, 624, 723, 796). *Brilliant and very rare, the Half-Rupee and Half-Anna Proof only dates; the silver ex H. M. Lingford Collection.* 8
- 244 1891 uniface Proof Silver Set, struck in COPPER, comprising *obv.* and *rev.* of the Rupee, Half-Rupee, Quarter-Rupee and Two-Annas (cf. Pr. 179, 301, 426, 546). *Brilliant (Rupee obverse dull) and with original colour, extremely rare, the Half-Rupee and Quarter-Rupee Proof only dates.* 8

## LOT

- 245\* 1891, Bombay, Proof Copper Set, struck in ALUMINIUM, (Pr. 592, 645, 724 (listed under Calcutta), 817). *Some corrosion on face on Half-Pice, otherwise brilliant, extremely rare.* 4
- 246\* 1892, Bombay, Restrike Proof Quarter-Rupee, struck in GOLD (as Pr. 427). *Brushmarked (in the die?), otherwise brilliant (rims lightly filed).* 1
- ∴ Pridmore labels this and the following two lots as 'original or period striking' for he states (p.193) that they were made for J. G. Murdoch and sold at Sotheby's, 22 July 1903, lots 134-180.
- 247\* 1892, Calcutta, Restrike Proof Half-Pice, struck in GOLD (as Pr. 725). *Hair scratches in obverse field, brilliant (rims lightly filed).* 1
- 248\* 1892, Calcutta, Restrike Proof Twelfth-Anna, struck in GOLD, 17.5 mm (as Pr. 797). *Obverse field flaky, otherwise brilliant (rims lightly filed).* 1
- 249 1892, Calcutta, part Proof Silver Set, comprising Rupee, Half-Rupee and Quarter-Rupee (as Pr. 133, 276, 397). *The Rupee a little stained, otherwise brilliant and very rare, the Quarter-Rupee a Proof only date.* 3
- 250 1892, Calcutta, Restrike Proof Copper Set, struck in SILVER (as Pr. 593, 625, 725, 797). *Half-Anna dull, Quarter-Anna and Half-Pice polished and lacquered, otherwise brilliant (all with traces of filing on rims), the Half-Anna a Proof only date; ex Farouk (2393).* 4
- 251 1892, Bombay, uniface Proof Silver Set, struck in COPPER, similar to lot 244 (as Pr. 181, 302, 427, 547). *Brilliant and extremely rare; ex H. M. Lingford Collection.* 8
- 252 1893, Calcutta, Proof Half-Anna and Half-Pice, struck in SILVER (as Pr. 594, 726). *Half-Anna with flange to rims, a Proof only date, the Half-Pice with rims lightly filed, brilliant and very rare; both ex Virgil M. Brand Collection.* 2

Lor

- 253 1894, Calcutta, Proof Silver and Copper Set, comprising silver Rupee, Half-Rupee, Quarter-Rupee and Two-Annas, copper Quarter-Anna, Half-Pice and Twelfth-Anna (as Pr. 135, 278, 399, 509, 627, 727, 799). *Rupee and Two-Annas polished and lacquered and the Quarter-Anna obverse dull, otherwise brilliant and very rare, the Rupee a Proof only date; the silver ex Farouk (2387).* 7
- 254 1897, Calcutta, Proof Copper Set, struck in SILVER, comprising Quarter-Anna, Half-Pice and Twelfth-Anna (as Pr. 630, 730, 802). *Brilliant and very rare; ex Virgil M. Brand Collection.* 3
- 255 1898, Bombay, Proof Silver Set, comprising Rupee, Half-Rupee, Quarter-Rupee and Two-Annas (as Pr. 184, 306, 431, 552). *Polished and lacquered (blotchy tarnishing), otherwise brilliant and very rare; ex Farouk (2387).* 4
- 256 1898, Calcutta, Proof Copper Set, struck in SILVER, comprising Quarter-Anna, Half-Pice and Twelfth-Anna (as Pr. 631, 731, 803). *Brilliant and very rare; ex Virgil M. Brand Collection.* 3
- 257 1901, Calcutta, Proof Copper Set, comprising Quarter-Anna, Half-Pice and Twelfth-Anna (as Pr. 634, 734, 805). *Last toned (possibly a Restrike), others with original colour, brilliant and rare.* 3
- 258 1903, Calcutta, Proof Half-Pice, struck in SILVER (as Pr. 735). *Brilliant and very rare; ex Virgil M. Brand Collection.* 1
- 259\* 1904, Calcutta, Proof Quarter-Anna, struck in SILVER (as Pr. 648). *Brilliant and very rare; ex Virgil M. Brand Collection.* 1
- 260 1905, Calcutta, Proof Half-Pice and Twelfth-Anna, struck in SILVER (as Pr. 738, 820). *Brilliant and very rare; ex Virgil M. Brand Collection.* 2
- 261 1906, Calcutta, Proof Copper Set, comprising Quarter-Anna, Half-Pice and Twelfth-Anna (as Pr. 650, 739, 821). *Brilliant and very rare.* 3



## Lot

- 262 1907 and 1909, Calcutta, Proof Annas (as Pr. 926, 928). *Former with blotches (surface corrosion?) on obverse, latter with traces on reverse, otherwise mint state, rare; both ex A. P. Spencer Collection.* 2
- 263\* 1909, Calcutta, Proof Half-Pice, struck in ALUMINIUM (as Pr. 743). *Minor knock both sides on neck and date, otherwise brilliant, extremely rare.* 1
- 264 1912, Calcutta, part Proof Set (Quarter-Rupee missing) with the elephant redrawn (see p. 77), comprising silver Rupee, Half-Rupee and Two-Annas, bronze Quarter-Anna, Half-Pice and Twelfth-Anna, cupro-nickel-Anna (as Pr. 208, 319, 565, 658, 745, 827, 942 (Bombay)). *The silver with dark tone, brilliant and very rare.* 7  
*∴ The Anna was only struck at Bombay from 1911 to 1920. Pridmore's ticket suggests this piece is part of the Calcutta Proof Set: certainly the quality is infinitely superior to the piece(s) in the next lot.*
- 265 1912, 1913, 1914 and 1915, Proof Annas (as Pr. 942-945). *All with some blotches, otherwise mint state, rare; all ex A. P. Spencer Collection.* 4
- 266 1916, Calcutta, Proof Silver Set (as Pr. 212, 323, 445, 569). *Brilliant (rims lightly filed) and very rare; ex A. P. Spencer Collection.* 4
- 267 1917, Bombay, and 1929, Calcutta, Annas (as Pr. 947 and 935). *Former blotchy, otherwise mint state; both ex A. P. Spencer Collection.* 2
- 268 1930, Calcutta, Proof Set, comprising silver Half-Rupee and Quarter-Rupee, *rims lightly filed*, bronze Quarter-Anna, Half-Pice and Twelfth-Anna, cupro-nickel Two-Annas and Anna (as Pr. 332, 451, 671, 763, 844, 890, 936). *Brilliant and very rare; ex A. P. Spencer Collection.* 7
- 269 1931, Calcutta, Proof Bronze Set (as Pr. 672, 764, 845). *Brilliant and very rare; ex A. P. Spencer Collection.* 3

## LOT

- 270 1938, Calcutta, Type I, Proof Set, comprising silver Rupee, Half-Rupee and Quarter-Rupee, *rims lightly filed*, bronze Quarter-Anna, Half-Pice and Twelfth-Anna, cupro-nickel Anna (as Pr. 231, 362, 471, 684, 770, 858, 959). *Brilliant and extremely rare, all but the bronze Quarter-Anna and cupro-nickel Anna Proof only dates; ex A. P. Spencer Collection.* 7
- 271 1939, Calcutta, Type I, Proof Set, as last but including a cupro-nickel Two-Annas (as Pr. 232, 363, 472, 685, 771, 859, 904, 960). *Brilliant and very rare, the Rupee listed as a Proof only date by Pridmore.* 8
- 272 1939, Bombay, Type I, part Proof Set (no Rupee struck, Quarter-Rupee missing (?)) comprising silver Half-Rupee, *irregular dark tone*, bronze Quarter-Anna, Half-Pice and Twelfth-Anna, cupro-nickel Two-Annas and Anna (as Pr. 352, 690, 773, 860, 913, 972). *Brilliant and very rare.* 6

## Tokens

**Group I:** Assam Tea Gardens and General, issued mainly between 1870 and 1914.

- 273 B[adulipur] T[ea] E[states Co.], brass, 25.5 (Pr. 9), *corroded at top, otherwise extremely fine*; Cawnpore, Cooper, Allen & Co., 1902, stamped 4, brass, 25.7 (Pr. 19A), *pierced at top and dented, fine*; Coombergam (3), 3 ANNAS, 30.0, 2 ANNAS 3 PIE, 26.0, and 9 PIE, 20.0, all tin (Pr. 25-27), *all scratched but very fine or better*; Famine (2), 1874, GRAIN TOKEN ONE RUPEE, brass with central hole, 25.6, an 1876, RELIEF  $\frac{1}{2}$  SEER TOKEN, copper with central hole, 19.8 (Pr. 32, 34), *extremely fine*; Hinghi Mari, ANNA  $\frac{1}{2}$ , brass with central hole, 23.3 (Pr. 34), *a little corroded, with flan flaw and two edge cuts, otherwise very fine.* 8
- 274 K[anan] D[evan] H[ills] P[roduce] Co. Ltd., 1 ANNA, brass, 27.0 (Pr. 51), *very fine*; Kookecherra, 1 PICE, brass, 21.2 (Pr. 60), *almost extremely fine*; Looba Cherra (2), both brass with central hole, 26.0 and 20.5 (Pr. 62, 63), *both with some corrosion, otherwise extremely fine*; Mazdehee, 3 ANNAS, brass with central hole, 31.0 (Pr. 76), *good very fine*; Morapore, 2 ANNAS 3 PIE, brass, 24.5 (Pr. 80), *very fine*; Noon Cherra, 1873 (2), both octagonal with central triangular hole, brass, 27.5 and 21.6 (Pr. 84, 85), *some corrosion otherwise extremely fine.* 8

## LOT

- 275 Sagurnal Consolidated Tea & Lands Co. Ltd., 10 PICE/9 PICE mule, copper, 29.5 (Pr. 119), *extremely fine and extremely rare, noted as a Pattern*; Salgunga, 2 ANNAS 3 PIE, brass, 24.5 (Pr. 133), *very fine*; South India Coffee Company Limited (2), both brass, VM1B, 25.5 and CM $\frac{1}{2}$ B, 20.5 (Pr. 147, 148A), *fine and very fine*; N[orth] W[estern] R[ailway], TOOL TOKEN, stamped 1674, brass, 26.0 (Pr. —), *very fine*; a Halfpenny, 1862, *obv.* countermarked ONE RUPEE W IIII within wreath, *fine*.

6

**Group II: Canteens and Clubs, issued during World War II**

- 276 Ambica Mills, Baroda, brass with central hole, 18.0 (Pr. 156); A[mmunition] F[actory] C5, Kirkee (2), both brass, 20.2, with and without central hole (Pr. 156, 157); The Apollo Mills, brass with central hole, 20.3 (Pr. 159); Baroda Mill (2), 1, circular, 20.5, and  $\frac{1}{2}$ , square, 18.0, both brass with central hole (Pr. 160, 161); B[uckingham] & C[arnatic] Mills (2), both nickel with central hole, round, 20.7, and square, 20.0 (Pr. 162, 163). *Very fine or better*.

8

- 277\* Central Ordnance Depot, Delhi,  $\frac{1}{2}$ , brass with central hole, 20.2 (Pr. —), *illustrated*; C[entury] S[pinning] & M[anu-facturing] Co. Ltd. (2), 1, square, 20.0, and  $\frac{1}{2}$ , round, 17.5, both brass with central hole (Pr. 164, 165); C[oim-batore] S[pinning] & W[eaving] Mills Ltd., brass with central hole, scalloped, 21.0 (Pr. 166); E[ast] I[ndia] D[istilleries] & S[ugar] F[actories] Ltd., brass with central hole, 21.0 (Pr. 167); Gold Mohur Mills,  $\frac{1}{2}$ , brass with central hole, 17.8 (Pr. 168). *Last with some corrosion, mostly very fine or better*.

6

- 278 Hind Mills Ltd., with legends in Hindi, nickel with central hole, 20.2 (Pr. 169); H. M. I[ndian] Dockyard, Bombay, copper, 21.4 (Pr. 170); H. M. Mint, Calcutta, 4, brass, 19.0 (Pr. 171); ICF-PER (2), 1, round, 20.3, and  $\frac{1}{2}$  square, 20.5, both brass with central hole (Pr. 176, 177); IMUM, brass, square, 16.5 (Pr. 179). *Second extremely fine, others very fine, last three not identified*.

6

## LOT

279 India United Mills Ltd., with legends in Hindi, brass with central hole, 20.8 (Pr. 179); K. B. M. Co., brass with central hole, square, 20.3 (Pr. 180), *not identified*; J. K [aiser?] Engineers' Files, brass with central hole, square, 19.0 (Pr. 181); The Khatau Mills, brass with central hole, 20.0 (Pr. 182); Kohinoor Mills, brass with central hole, 20.0 (Pr. 183); Laxmi Cotton Mills, brass with central hole, 20.0 (Pr. 184); M[adras and] S[outhern] M[ahratta] R[ailway] (2), both brass, 20.2, central hole circular and star-shaped (Pr. 185, 186). *Very fine or better.*

8

280 Madura Ramnad Police, brass with central hole, square, 20.3 (Pr. 187); Mettur Chemicals, brass with central hole, square, 20.0 (Pr. 188); Morarjee Mills, with Hindi legends, nickel with central hole, square, 20.3 (Pr. 189); Mysore Gold Mine (2), both brass with central hole, 20.4, one with star counterstamp (Pr. 190, 191); New City Mill, nickel with central hole, square, 20.4 (Pr. 192); New Great Mill, brass with central hole, scalloped, 20.3 (Pr. 193). *First fine, others very fine or better.*

7

281 New Kaisers Hind Mills, brass with central hole, 20.0 (Pr. 194); Prabha Mills (3), 1, scalloped, 20.0, and  $\frac{1}{2}$  (2), both square, dies differ, all brass with central hole (Pr. 195-197); R.M.P.K., brass with central hole, 20.0 (Pr. 198), *not identified*; Raghuvanshi Mill, brass with central hole, 20.3 (Pr. 199); Retreat Club, Silchar (2), both brass with central hole, octagonal, 25.8 and 19.3 (Pr. 200, 201). *Very fine to extremely fine.*

8

282 Savaji Mills (2), 0.10 (Naye Paise), scalloped, 22.3, and 0.01 (Naye Paise), 18.5, both brass with central hole (Pr. 202, 203), *the denominations demonstrating that these tokens were in use after the currency reform of 1957*; Shree Niwas Mills, brass with central hole, 20.2 (Pr. 204); Soldiers Club, Shillong, brass with central hole, octagonal, 19.2 (Pr. 205); South Indian Railway, brass with central hole, square, 20.5 (Pr. 206); Tata Mills, nickel with central hole, scalloped, 20.3 (Pr. 207). *Very fine or better.*

6



LOT

**Group III: Military**

- 283 16 Q[ueens] L[ancers], 2 TWO ANNAS, brass, 23.4 (Pr. 208); XVIII Husars, 8 ANNAS COFFEE SHOP, brass, 28.0 (Pr. 210); R[oyal] A[rtillery] I[nstitute], Kirkee,  $\frac{1}{2}$  A (incuse), brass, 29.9 (Pr. 214); R[oyal] A[rtillery] L[—?], 27 (Mountain Battery?),  $\frac{1}{2}$  A (incuse), brass, 28.6 (Pr. 215); D[urham] L[ight] I[nfantry], 1 ANNA, brass, 23.2 (Pr. 219); Royal Ulster Rifles, 8 AS HFS 1924, brass, 27.7 (Pr. 220); I[st] Lancashire, 3D, 1827, copper, 28.2, and Army Canteen Services, BCOF ONE UNIT, aluminum, 22.0. *Mostly very fine or better.* 8
- 284 Miscellaneous Checks and Tallies (11): Automatic Machine Co. (India) (5), nickel (4), 25 (Units), 24.0 and 1 (Unit) (3), all 19.0, and brass with central hole (1), 21.0; Fazalbhoy Peeroo Mahomed, Bombay (2), both brass, 22.7, *fine and fair*; Photomaton, 8-ANNAS above and below elephant (incuse), brass, 23.7; S.M. Ltd., stamped 1 over 284, copper, 22.0; A.R. Ltd., stamped 136, brass with hole at top, 26.3; Rewah, copper dump, 15.93 grams, lion within legend, *rev.* Agent Busby Saheb 1849, *fine. Except as stated, very fine or better.* 11

**Miscellaneous**

- 285 Forgeries (8) including a Sovereign, 1918 I, *defaced*; a Proof Anna, 1939, Calcutta, Type I (as Pr. 960), *brilliant*; a mis-struck Half-Rupee, 1943, Bombay, *almost extremely fine*; currency (4) and another 15
- 286 Indian Rupees (5), 1879-1890, all countermarked for Portuguese Africa, PM (2), PM crowned (3) and a German East Africa, Rupee, 1891, with false countermark PM crowned. *Fine or very fine.* 6
- 287 Bombay Mint, gold One Tola, crown within wreath, *rev.* ONE TOLA FINE - 996 -, edge plain with eight scallops, 23.2 mm. *Almost extremely fine.* 1
- 288 Bombay Mint for Manilal Chimanlal & Co., gold One Tola, 995.5 fine, gateway and map of India, oblong, 18.5 by 12.5 mm. *Very fine.* 1

## LOT

- 289 Manilal Chimanlal & Co., Bombay, gold One Tola, 995 fine, star and Diamond Fine Gold, 23.2 mm. *Extremely fine.* 1
- 290 Habib Bank Ltd., gold Quarter-Tola, 995 fine, 16.6 mm, and Roshanlal Girdharlal & Co., silver ingot for 10 Grams, round, 28.8 mm. *Almost extremely fine.* 2
- 291 Ahmadabad, in the name of Akbar Shah (1806-1837), Rupees (2) and a Falus, *very fine, placed under Mahrathas in BM*; a Broach, Rupee and a Moghul,  $\frac{1}{16}$ -Rupee, of Shah Alam, Muirshidabad, RY 5, *both very fine.* 5

## NEW ZEALAND

- 292\* Proof Crown, 1935, Waitangi. *Very slightly rubbed and with slight marks, otherwise brilliant, rare.* 1
- 293 Proof Set, 1953. *Brilliant, in fitted case of issue.* 8
- 294 Proof Sets (11), 1965, 'Selected' and 1967, 'Polished', *in issue card folders*, 1968, 1969, Cook (2), 1970, Royal Visit, 1973, 1975, 1976, 1978, 1979, *all in cases of issue. Brilliant.* 76
- 295 Mint Sets (17), 'Uncirculated' (16), *in issue card folders* (2), 1965, 1967, *in red plastic folders* (11), 1968 (folder missing), 1969 (2), 1970 (2), 1971-1976, *in brown plastic folder* (1), 1977, *in blue plastic folders* (2), 1978, 1979, and a 'Specimen', 1970, *in blue plastic folder, mint state*; Crowns (8), Proof (6), 1970, Cook (2), 1973 (2), one Cook Islands, 1974, Commonwealth Games, 1978, Jubilee, *brilliant, in fitted cases of issue*, and currency (2), 1949, 1953 and a Dollar, 1974, Commonwealth Games, *extremely fine.* 127

## Tokens

- 296\* Alliance Tea Company, Christchurch, Penny, 1866 (A. 8). *Several marks otherwise very fine, a rare variety.* 1
- 297 Anderson, D., Wellington, Penny and Halfpenny (A. 9, 10), *almost very fine*; Ashton, H., Auckland, Halfpennies (2), 1859, 1860 (A. 18, 19), *almost extremely fine*, and Pennies (4), 1862, 1863 (3) (A. 21-24), *very fine.* 8

## LOT

- 298 Barley, Charles C., Auckland, Pennies (2-A. 27, 32); Beath, G. L. & Co., Christchurch, Pennies (3-A. 36, 38, 40), *last scored*; Beaven, S., Invercargill, Penny, 1863 (A. 42); Brown & Duthie, New Plymouth, Penny, 1866 (A. 50). *Mostly very fine.* 7
- 299 Caro, J. & Co., Christchurch, Penny (A. 62); Clark, Archibald, Auckland, Penny, 1857 (A. 64); Clarkson, S., Christchurch, Pennies, 1875 (4-A. 65-68); Clarkson & Turnbull, Timaru, Pennies, 1865 (3-A. 69-71). *Last with large piercing, otherwise mostly very fine or better.* 9
- 300 Coombes, Samuel, Auckland, Pennies (2-A. 76, 77); Day & Mieville, Dunedin and Otago, Penny, 1857 (A. 98); De Carle, E. & Co., Penny, 1862 (2-A. 101, 102); Forsaith, T. S., Penny, *dented*, and Halfpenny, 1858 (A. 130, 131). *Very fine or better.* 7
- 301 Gaisford & Edmonds, Christchurch, Penny, 1875 (A. 142); Gilmour, John, New Plymouth, Penny (A. 143); Gittos, B., Auckland, Penny, 1864 (A. 149); Gourlay, T. W. & Co., Christchurch, Penny, (A. 151); Gratten, R., Auckland, Penny, 1872 (A. 152); Hall, Henry J., Christchurch, Penny and Halfpenny (A. 159, 161). *Mostly very fine or better.* 7
- 302 Hall, H. J., Christchurch, Pennies (5-Meek 22, A, B, D, F); Hobday & Jobberns, Pennies (2-A. 249, 253). *Very fine or better.* 7
- 303 Holland & Butler, Auckland, Penny (A. 263), *almost very fine*; Hurley, J. & Co., Wanganui, Penny and Halfpenny (A. 276, 277), *almost extremely fine*; Jones and Williamson, Dunedin, Penny, 1858 (A. 308), *very fine*; Kirkaldie & Stains, Wellington, Penny and Halfpenny (A. 311, 312), *very fine or better.* 6
- 304 Levy, Lipman, Wellington, Pennies (2), *revs. inscription* (A. 321) and Wellington (A. 323). *Both nearly extremely fine.* 7

## LOT

- 305 Licensed Victuallers Association, Auckland, Pennies, 1871 (3-A. 327-329), *first extremely fine, others very fine*; Mason, Struthers & Co., Christchurch, Pennies (2-A. 354, 355), *fine and nearly extremely fine*; McCaul, George, Grahamstown, Penny, 1874 (A. 359), *good very fine*; Merrington, J. M. & Co., Penny (A. 363), *almost extremely fine*. 7
- 306 Milner & Thompson, Christchurch, Pennies (8), large (3), 1881 (2), instruments, *rev. landscape* (A. 376), *good very fine*, instruments, *rev. chief* (A. 377), *almost extremely fine*, Undated (1), landscape, *rev. chief* (A. 378), *good very fine*, small (5), 1881 (3), instruments, *rev. chief* (A.379), *mint state*, instruments, *rev. landscape* (A. 380), *mint state, toned*, instruments, *rev. inscription* (A. 381), *almost extremely fine*, Undated (2), inscription, *rev. chief* (A. 382), *scratches, very fine*, inscription, *rev. landscape* (A. 383), *almost mint state*. 8
- 307 Morrin & Co., Auckland, Pennies (4-A. 387, 388, 389 and Meek 36B), *first very fine, others fine*; Perkins & Co., Dunedin, Penny and Halfpenny (A. 435, 436), *almost extremely fine*; Petersen, W. Christchurch, Penny (A. 437), *very fine*. 7
- 308 Pratt, W., Christchurch, Penny (A. 445), *fine*; Reece, Edward, Christchurch, Pennies (3-A. 447-449), *fine*, and Half-pennies (2-A. 450, 452), *fine and almost extremely fine (blotchy tone)*. 6
- 309 Smith, S. Hague, Auckland, Pennies (7-470, 471, 474, 475, 477, 478 and Meek 42F/42B). *One cleaned, last fine, others mostly very fine*. 7
- 310 Somerville, M., Auckland, Pennies, 1857 (4-A. 497-500); Union Bakery Co., Christchurch, Penny (A. 588); United Service Hotel, Auckland, Penny, 1874 (2-A. 590, 591); Wallace, J, Wellington, Penny, 1859 (A. 592); Waters, Edward, Auckland, Pennies (2-A. 610 and Meek 47). *Last fine, others very fine or better*. 10
- 311\* Wilson, A. S., Dunedin, Penny, 1857 (A. 639). *Scratched in reverse field but very fine, rare*. 1



Lot

**SINGAPORE MERCHANTS' TOKENS**

- 312 Groups I and II (1198), including imitation Netherland Indie Copper Quarter-Stivers (17), various, duplicates of Pridmore II, lots 96-115. *Mostly fair or fine, an interesting parcel for study.* 1198
- 313 Group III, with the names of the Native States of the Archipelago (9), One Keping (8), Percha, Menanghabau, Dilli, Siak, Malayu, Perak, Selangor, Trengganu, all dated A. H. 1251 (Pr. 97-104) and a Doit for Celebes, A. H. 1250 (Pr. 105). *Very fine.* 9
- 314 Group III (12), One Keping (10), Menanghabau (2), *one fine*, Dilli (3), Siak, Malayu (2), Selangor, Trengganu, all dated A. H. 1251 (Pr. 98 (2), 99 (3), 100, 101 (2), 103, 104) and Doits (2) of Celebes, A.H. 1250 (Pr. 105). *Except as stated, mostly very fine.* 12

**COIN TRAYS**

- 315 Coin trays (61), all 17 $\frac{1}{2}$ in. by 13 $\frac{1}{4}$ in., laminated from a plywood base and a pierced hardboard top, with green baize between and tape loops at sides, to hold 5476 coins (2470 of 1in., 1584 of 1 $\frac{5}{16}$ in., 1134 of 1 $\frac{1}{2}$ in., 288 of 1 $\frac{13}{16}$ in.), *well made, doubtless by Army workshops*; a cloth covered card box, with rising half-top and fall front, containing 6 finger pierced, felt-lined, hardwood trays, to hold 308 coins (224 of 1 $\frac{3}{16}$ in., 84 of 1 $\frac{3}{8}$ in.), *in good condition*; another tray. 68

*END OF SALE*



# PLATES







2



4



16



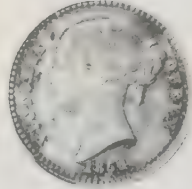
5



10



12



17



18



20



22



27



PLATE II



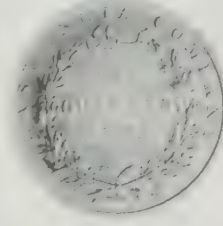
42



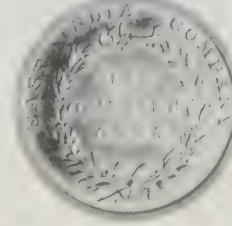
43



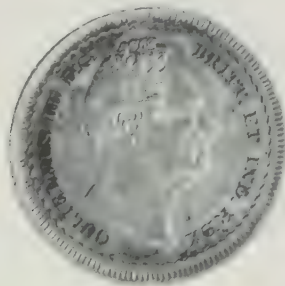
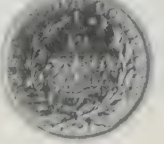
44



47



52



53



54

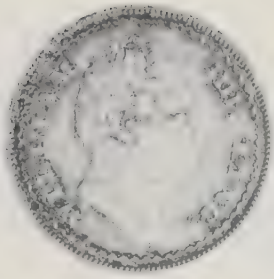


55



56





57

58

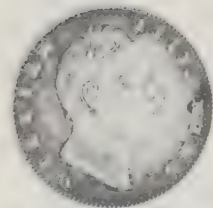
59

60

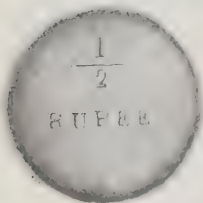
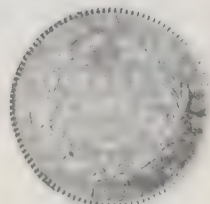


61

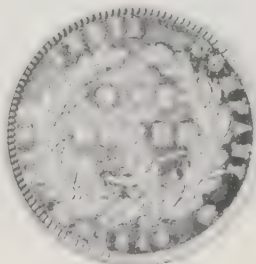
62



63



64



65

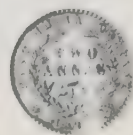
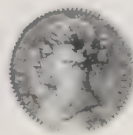
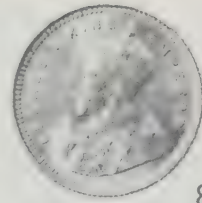


PLATE IV

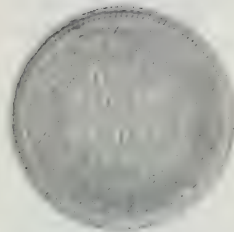


68

66



89



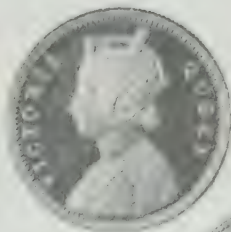
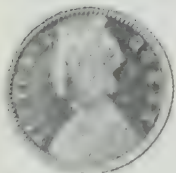
73

74

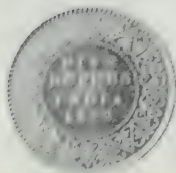
79

84

90

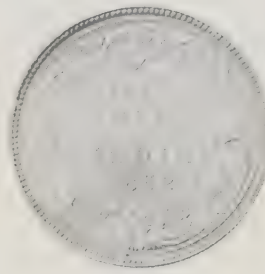
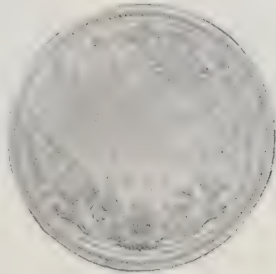


101



96





103

107

109

116

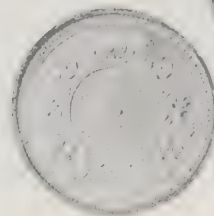
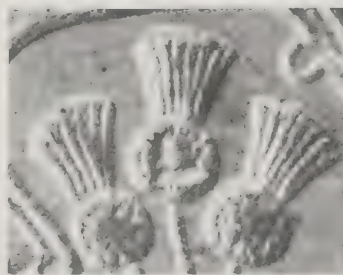


119

120

131

135

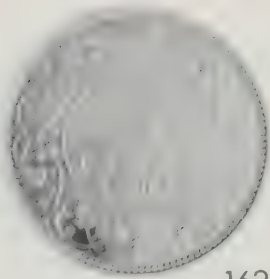
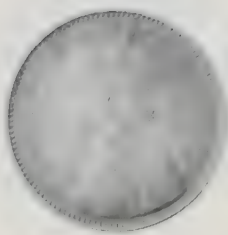


137

147

147

PLATE VI



162

163

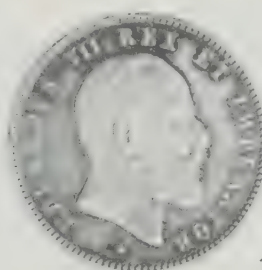
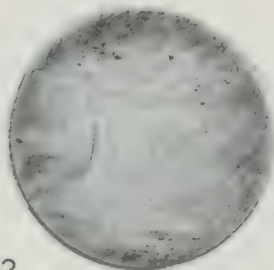
170

185

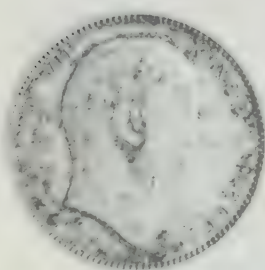
192



193



194



195

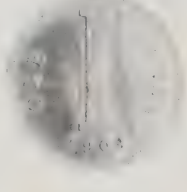
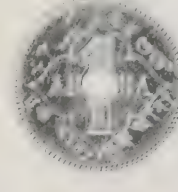
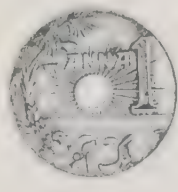
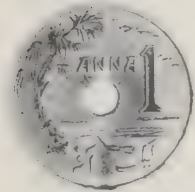
196

197

198

199





200

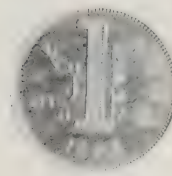
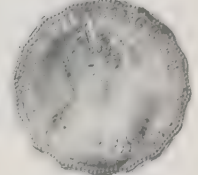
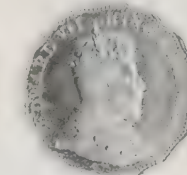
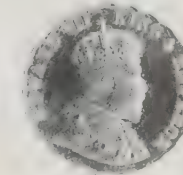
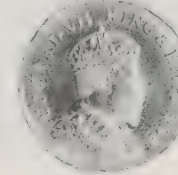
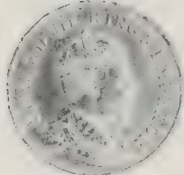
201

202

203

204

205



206

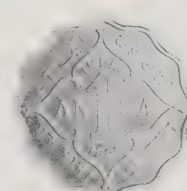
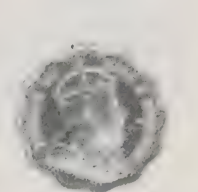
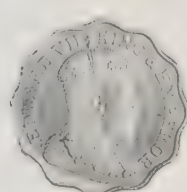
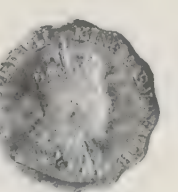
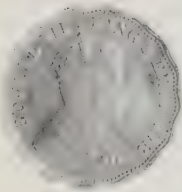
207

208

209

210

211



212

213

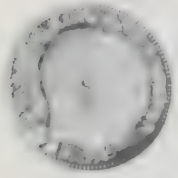
214

215

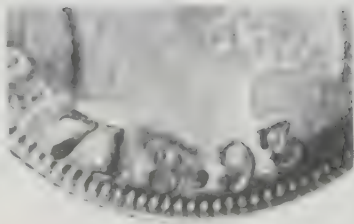
216

217

PLATE VIII



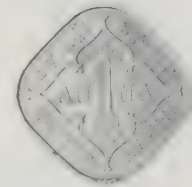
218



218



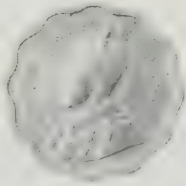
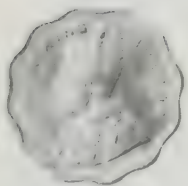
219



220



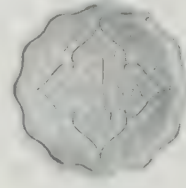
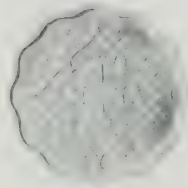
221



222

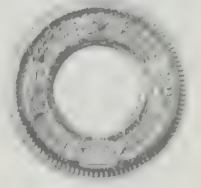


223

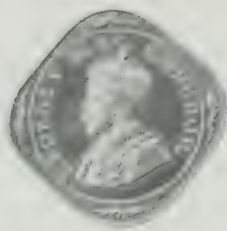


224

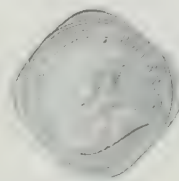
225



226



227



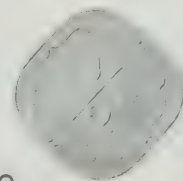
229



230



228







236

245

246



263

277



247

248

259



292



296

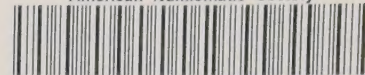


311









## SALE CATALOGUES

On the average we issue twelve or more Coin Catalogues and three Naval & Military Medal Catalogues each year, some of which are usually of Sales of important Collections.

### CATALOGUE SUBSCRIPTIONS

**Sale Catalogues**, frequently illustrated, are normally posted to Subscribers about three weeks prior to the date of Sale.

**Lists of "Prices Bid"** are issued after each Sale, thus giving at a glance a reliable guide to value. The final test of value must always be auction prices rather than the figures given in books of reference, for changing times and fashions soon render the latter obsolete and misleading. The Lists of "Prices Bid" will probably be enclosed in a following Sale Catalogue.

### AIR MAIL POSTAGE

To allow subscribers resident outside Europe time to submit Postal Bids, Sale Catalogues will, if desired, be sent by Air Mail. Air Mail postage is not, however, included in the Subscription Rate and the cost must be borne by the Subscriber. In such cases a deposit against the cost is required.

### ANNUAL SUBSCRIPTION RATES

*(commencing from 1st January)*

Type of Catalogue	SURFACE MAIL (including postage)		AIR MAIL (excluding postage)
	U.K., I.ofM. C.I., Irish Republic	ALL other places	
COIN Sales	£12	£15	£10
NAVAL & MILITARY MEDAL Sales	£1	£2	£1

Deposit required against cost of AIR MAIL postage:

Coin Sales add ..... £10

Medal Sales add ..... £1

Catalogues of past Sales cannot be supplied.

# GLENDINING & CO.

AUCTIONEERS & VALUERS

of

COINS & MEDALS

Buyers are NOT liable for Commission on the cost of their purchases.

## CASH ADVANCES

If required, cash advances will be made at our discretion and at our valuations on the understanding that Lots are submitted for sale ENTIRELY WITHOUT RESERVE and at a Commission Rate of 12½% on realisation.

In the event of repayment of the Cash Advance before the Sale takes place, a charge of 10% on the amount advanced will be payable.

## COMMISSION FOR SELLING

10% on the amount realised	}	Minimum Charge of £10.00 per Lot
5% on reserve prices for Lots remaining unsold		

All goods will be held insured against fire and burglary, pending sale, at a premium of £1 per £100, unless the Auctioneers are instructed to the contrary.

SETTLEMENT MADE 14 DAYS AFTER DATE OF SALE

## EXPERT ADVICE

Expert advice is immediately available for the examination of property submitted to these Rooms for Sale by Auction.

## VALUATIONS

Probate and Insurance Valuations on Collections at agreed scale of charges.

*Further information on application to the Auctioneers at:*

**7, Blenheim Street, New Bond Street, London, W.1.**

**Telephone: 01-493 2445 (3 lines)**